



CLARENCE PARK

GREENSPACE ACTION PLAN

2022 – 2027

Produced by:

On behalf of:



OVERVIEW

Greenspace Action Plans

Greenspace Actions Plans (GAPs) are map-based management plans which specify activities that should take place on a site over a stated period of time; these activities will help to deliver the agreed aspirations which the site managers and stakeholders have identified for that site.

Public Engagement

Engagement with stakeholders is at the centre of effective management planning on any site. A mind-mapping session was held on 11 February 2020 in advance of a meeting of the Clarence Park Consultative Forum. This enabled stakeholders to pinpoint how they use the park and suggest changes, both in terms of the management and the long term vision.

An initial engagement period was held for 6 weeks between August and October 2020, to establish core aims and objectives for the site; these are reflected in Section 3.

A second stage of engagement asked stakeholders to comment on the detailed proposals within a draft plan and was run for 6 weeks between June and August 2021.

Version Control

Version	Issue Date	Details	Author	Reviewed	Approved
01	June 2021	Issue for public comment	GA	AT	NS
02	January 2022	Amendments following public engagement	GA	AT	NS
03	March 2022	Production of final plan	GA	AT	NS
03.1	January 2026	Action plan review	AT		

CONTENTS

1.0	Summary	1
1.1	Site Summary	1
1.2	Vision Statement.....	1
2.0	Site Description	2
2.1	Introduction	2
2.2	Geography and Landscape.....	5
2.2.1	Formal Park	5
2.2.2	Recreation Ground	5
2.2.3	Designations.....	6
2.2.4	Surrounding Area.....	6
2.3	History	6
2.3.1	Victorian Park Landscapes	6
2.3.2	Donation of the Park	6
2.3.3	Original Layout.....	7
2.3.4	Opening and Early Management.....	7
2.3.5	Conveyance.....	8
2.3.6	Air Raid Shelter.....	8
2.4	Habitats and Wildlife	9
2.4.1	Setting	9
2.4.2	Grassland	9
2.4.3	Trees	9
2.4.4	Shrub Beds.....	10
2.5	Access, Facilities and Infrastructure.....	11
2.5.1	Paths	11
2.5.2	Site Entrances	11
2.5.3	Boundary Fencing.....	12
2.5.4	Furniture	12
2.5.5	Signage and Interpretation.....	12
2.5.6	Sports Facilities	13
2.5.7	Catering Facilities	14
2.5.8	Public Conveniences	15
2.5.9	Buildings	15
2.5.10	Sensory Garden.....	15
2.5.11	Play Area	16

2.6	Community and Events.....	18
2.6.1	Clarence Park Consultative Forum	18
2.6.2	Events.....	18
3.0	Aims & Objectives.....	19
4.0	Management Prescriptions.....	21
4.1	Geography and Landscape.....	21
4.1.1	Functionality	21
4.2	Habitats and Wildlife	21
4.2.1	Grassland	21
4.2.2	Trees	22
4.2.3	Shrub Beds.....	23
4.3	Access, Facilities and Infrastructure.....	24
4.3.1	Paths	24
4.3.2	Site Entrances	25
4.3.3	Boundary Fencing.....	25
4.3.4	Furniture	25
4.3.5	Signage and Interpretation.....	26
4.3.6	Sports Facilities	26
4.3.7	Sensory Garden.....	27
4.4	Community and Events.....	27
4.4.1	Staff Presence/ Presence of Authorities.....	27
4.4.2	Clarence Park Consultative Forum	27
4.4.3	Events.....	27
5.0	Action Plans and Maps	29
5.1	Annual and Regular Actions.....	29
5.2	Year 1 2022-23.....	30
5.3	Year 2 2023-24.....	32
5.4	Year 3 2024-25	33
5.5	Year 4 2025-26.....	34
5.6	Year 5 2026-27	34
6.0	Appendices.....	40
6.1	Appendix A: Oak Processionary Moth Procedures.....	40

1.0 SUMMARY

1.1 Site Summary

Site Name:	Clarence Park
Site Address:	Clarence Road, St Albans, AL1 4NF
Grid Reference:	TL157074
Size:	10ha
Designations:	Conservation Area
Owner:	St Albans City & District Council

1.2 Vision Statement

To maintain the park to a high standard and, where appropriate, enhance it and adapt it to meet modern day requirements where they are compatible with the Park's heritage, keeping the local community at its core.

2.0 SITE DESCRIPTION

2.1 Introduction

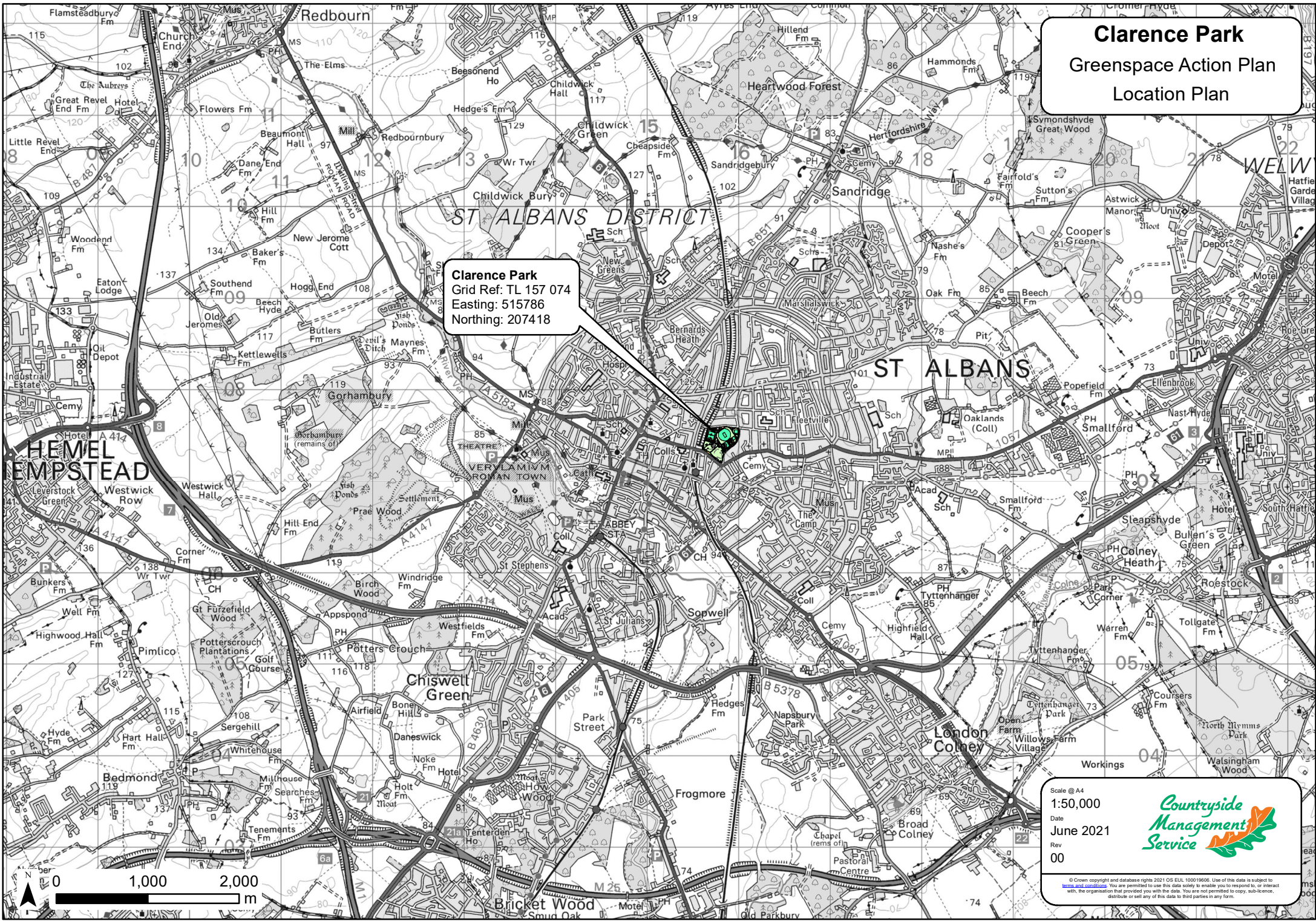
Clarence Park is located on the eastern side of the city of St Albans, close to the centre. It is a short walk from the city's historic centre and St Albans City railway station, whilst being easily accessible from numerous nearby businesses and schools. Located within suburban roads it is widely used by the nearby residents.

This plan seeks to outline:

- the management requirements that will ensure the park continues to play a valued role in the lives of the people of St Albans
- a series of achievable tasks to enhance the park that can be carried out within the current budget and management regime
- longer term aspirations that will form the basis of future funding applications and guide any significant changes within the park

Clarence Park Greenspace Action Plan Location Plan

Clarence Park
Grid Ref: TL 157 074
Easting: 515786
Northing: 207418

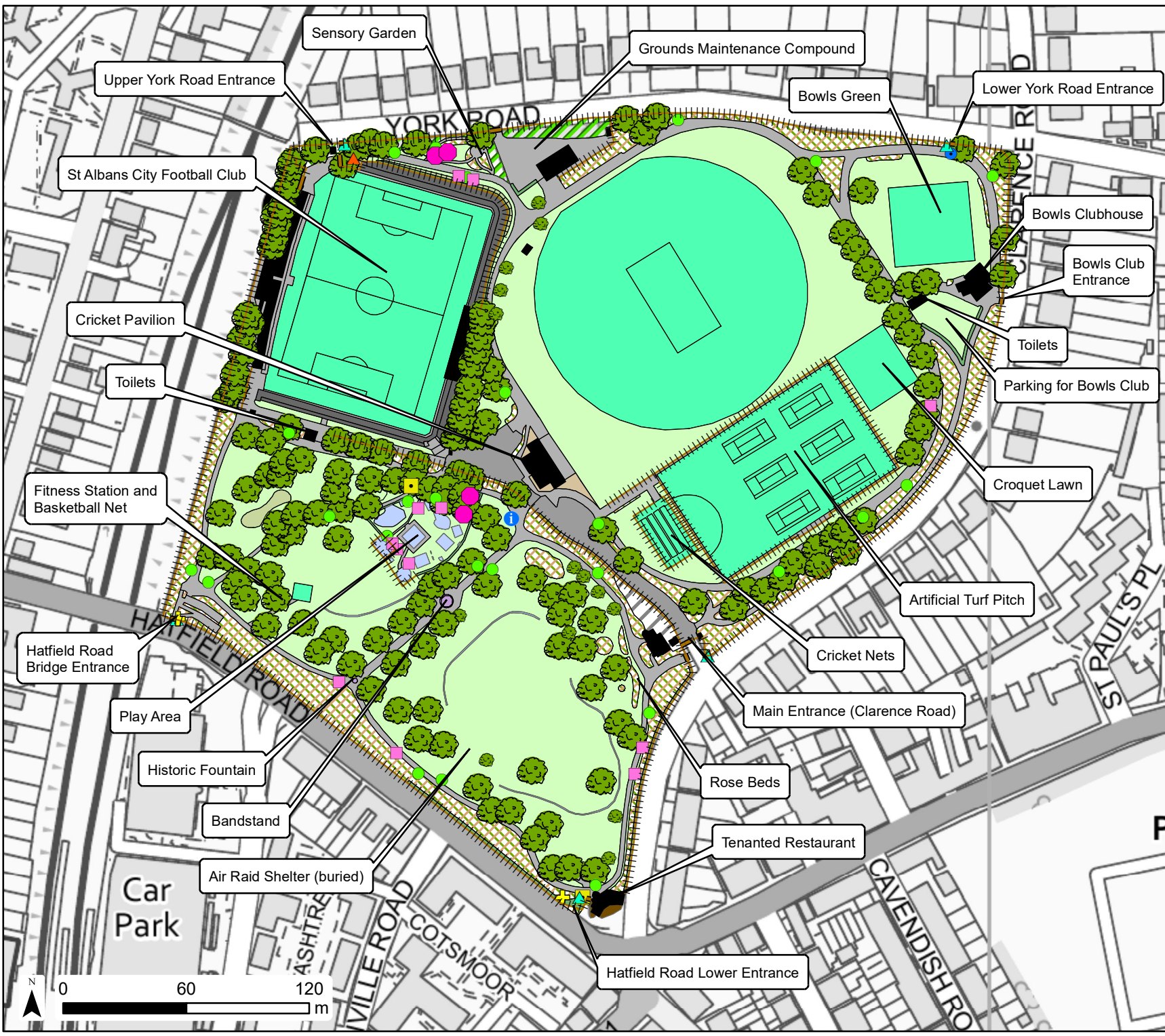


Scale @ A4
1:50,000
Date
June 2021
Rev
00



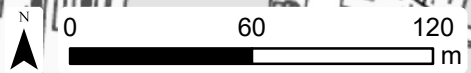
© Crown copyright and database rights 2021 OS EUL 100019606. Use of this data is subject to https://www.gov.uk/government/uploads/system/uploads/attachment_data/file/91222/os-licence-conditions.pdf. You are permitted to use this data solely to enable you to respond to, or interact with, the organisations that provided you with the data. You are not permitted to copy, sub-licence, distribute or sell any of this data to third parties in any form.

Clarence Park Greenspace Action Plan Site Description



Legend

- <all other values>
- Amenity Grass
- Building
- Bulbs
- Hedgerow
- Heritage
- Play
- Private Garden
- Resin Surface
- Restaurant
- Scrub
- Sealed Surface
- Shrub Bed
- Sports Pitch
- Terrace
- Tree Cover
- Unbound Surface
- Vehicle Access
- Wildflower
- Fence
- Gate
- Bench
- Code of Conduct Sign
- Notice Board
- Waymarking
- Picnic bench
- Interpretation
- Football Club Sign
- Entrance Sign
- Bin
- Young Tree
- Established Tree




Scale @ A4
1:2,500
Date
May 2021
Rev
00



© Crown copyright and database rights 2021 OS EUL 100019606. Use of this data is subject to https://www.gov.uk/government/uploads/system/uploads/attachment_data/file/100019606/100019606.pdf. You are permitted to use this data solely to enable you to respond to, or interact with, the organisations that provided you with the data. You are not permitted to copy, sub-licence, distribute or sell any of this data to third parties in any form.

Clarence Park Greenspace Action Plan Constraints Plan

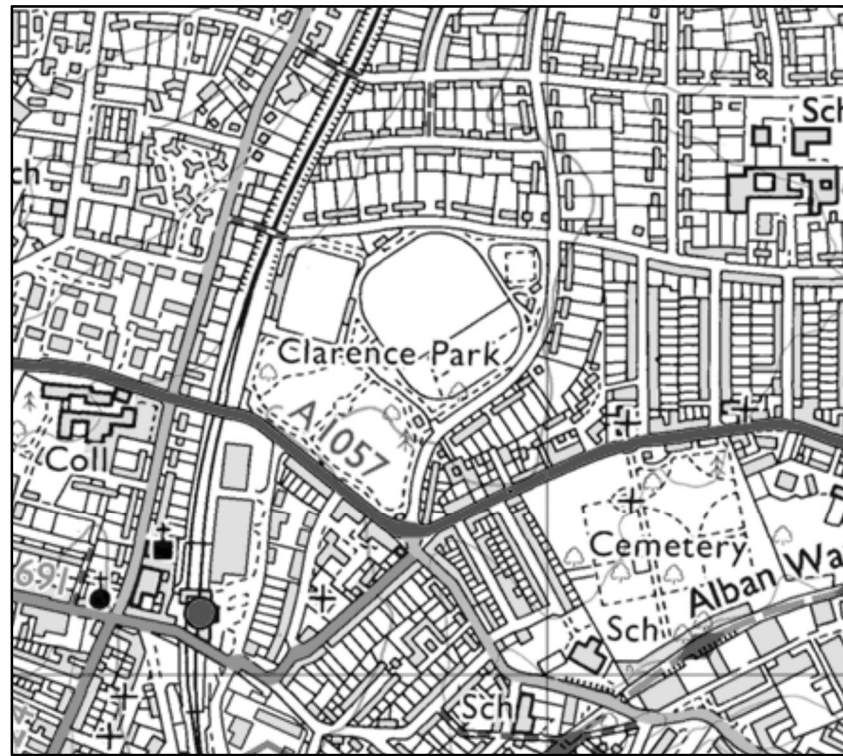
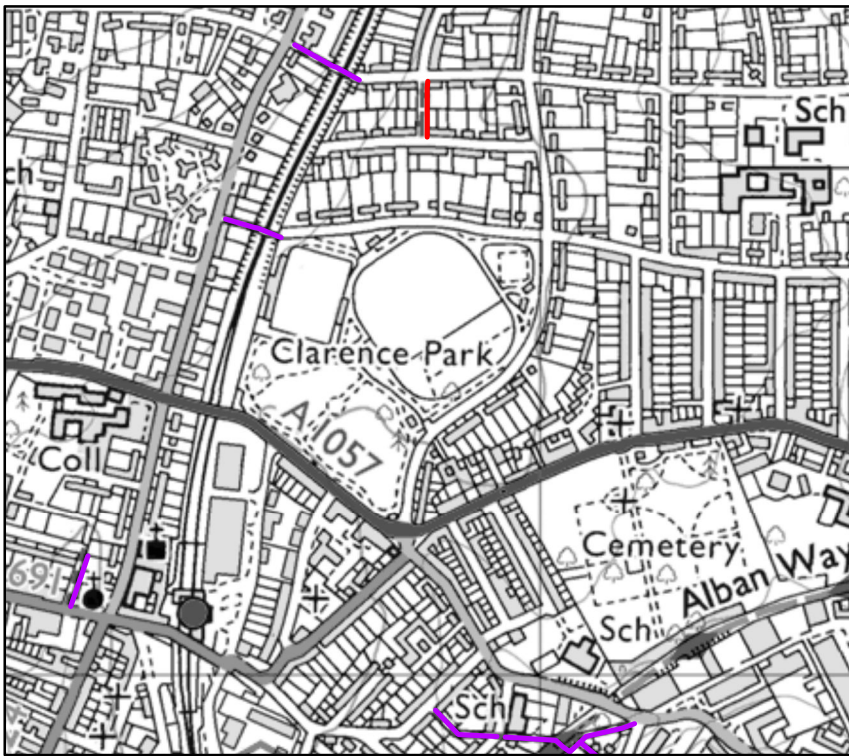
Legend

-  Restricted Byway
-  Footpath
-  Footprint

Image

Value High : 255

 Low : 7



Scale @ A4
 1:10,000
 Date
 June 2021
 Rev
 00



© Crown copyright and database rights 2021 OS ELL 100019608. Use of the data is subject to [terms and conditions](#). You are permitted to use this data solely to enable you to respond to, or interact with, the organisation that provided you with the data. You are not permitted to copy, sub-licence, distribute or sell any of this data to third parties in any form.

2.2 Geography and Landscape

Clarence Park covers an area of approximately 10 hectares (25 acres). It has two distinct compartments, the formal park and the recreation ground.

2.2.1 Formal Park

The formal park covers an area of approximately 3.6 hectares (9 acres). It includes a wide range of features from the original park, including rose and flower beds, extensive tree and shrub planting, an Aberdeen granite drinking fountain and the park keeper's lodge. There is a bandstand present, though this is not the original.



Bandstand in the Formal Park

The boundary of the formal park typically consists of a fence and dense shrub borders. These, along with the mature trees, provide an enclosure to the space which remains a defining feature of its character.

Subsequent additions to the park since its original design include a children's play area, fitness equipment and the conversion of a former toilet block to a restaurant.

2.2.2 Recreation Ground

The recreation ground covers an area of approximately 6.4 hectares (16 acres). It remains extensively used, providing a number of sports facilities, including football, cricket, tennis, croquet and bowls. The regular use of these sports facilities is fundamental to maintaining the vibrant atmosphere of the park.

The gothic style Cricket Pavilion provides a visual focus of the recreation ground and is used primarily by the cricket club.

On the western end of the park is the football ground of St Albans Football Club. A small triangular area between the north of football ground and York Road includes a Sensory Garden.

2.2.3 Designations

Clarence Park is situated in a Conservation Area with a number of its buildings being locally listed. As such the park is subject to extra restrictions to permitted development.

Since the northern part of Clarence Park was a gift to the people of St Albans, its use is governed by the rules of the Charity Commission which requires amongst other things that the St Albans City Football Club's pitch remains open to the general public, apart from when it is in use for matches.

2.2.4 Surrounding Area

There are substantial residential areas around the park, with flats to the west and houses with gardens to the north and the east. Southeast of the park along Hatfield Road there are a series of shops and restaurants, as well as religious buildings and Hatfield Road Cemetery. St Albans City train station is close by to the south of the park, alongside a number of local businesses.

Whilst the area has relatively low levels of crime, anti-social behaviour does get reported within the park. Public Health England statistics for St Albans show the vast majority of health indicators for the area are better than or similar to the national average.

2.3 History

2.3.1 Victorian Park Landscapes

The Victorian era saw an increasing focus on provisions for 'rational recreation' as a response to poor health and growing social discontent amongst the growing urban populations. This led to the development of many public sports grounds and associated buildings, including the likes of cricket, football and tennis. At the same time, new parks were being established in the form of formal gardens, portrayed for their beauty and to display the latest in horticultural techniques and ornamental species.

These two driving influences on Victorian landscape architecture are clearly on display within Clarence Park. Unlike later parks that sought to combine form and function, Clarence Park has two distinct sides to the park, each of which served its own purpose to the Victorian society.

2.3.2 Donation of the Park

Clarence Park was given to the city by a wealthy local businessman, Sir John Blundell-Maple, who at that time was the MP for Dulwich. The park was opened in 1894. There were public open spaces in the city before then, but no public park, and no areas specifically intended for recreation. The reason for the gift was that the St Albans Cricket Club wanted a permanent ground. They played their matches on Bernard's Heath, on the northern edge of the city, and felt that they had no security of tenure or facilities such as a pavilion. With no

possibility of affording their own ground, they approached Sir John, a successful businessman who had a large estate at Childwickbury, just north of St Albans, and he agreed to provide a ground for them. The initial scheme expanded into a combination of sports facilities of about 16 acres and a public park of nine acres.

Part of the land, with its southern boundary on Hatfield Road, was purchased by Blundell-Maple from Earl Spencer, who had large landholdings in the district, and part from Frederick Sander, the orchid nurseryman, whose nursery was on Camp Road, on the other side of Hatfield Road. As part of his agreement to the sale of the land, Spencer stipulated that a road be built along the eastern border of the park for housing development, now called Clarence Road. The park was to be given to the people of St Albans, and the local Council was to be responsible for its upkeep.

Sir John was known for his philanthropy, love of sport, and assistance to his local community. It is therefore not surprising that the cricket club members approached him for help. The Council were also appreciative of his intention to give land and money for not only a sports ground but also a public park and recreation ground, something the city lacked.

2.3.3 Original Layout

The cricket field was originally surrounded by a running track and cycle track, both banked. Here Sir John was adamant that the cycle track surface was to be of cinders, not wood (a faster surface), as it was for 'ordinary folk' to use, not just a few elite members of a cycling club. There was also a football pitch, tennis courts and bowls. Overlooking the cricket ground he built a pavilion which could accommodate 300-400 spectators, unusually large for one in a public park; but he hoped that this would become the home of the county cricket club.

The park was laid out in quite a simple way on flat ground, although there was a steep bank alongside Hatfield Road where it rose up to the bridge over the railway. There was a bandstand (Victorian curly cast-iron with a heather thatched roof), and Sir John's wife donated a polished granite drinking fountain. By the entrance gates between the park and the recreation ground a Gothic-style lodge was built for the superintendent. Both the pavilion and the lodge were designed by the district surveyor and built by the local firm of Miskin's.

William Paul's nursery at Waltham Cross supplied 11,000 trees, shrubs and bedding plants for the beds near the lodge. The trees included a variety of conifers, hollies, limes, chestnuts, Ailanthus and others, many of which remain today. The formal bedding was restricted because Sir John did not want the continuing upkeep to be a burden on the ratepayers. The recreation ground and the park were laid out by Mr Ford, the district surveyor. A superintendent, selected from ninety-five applicants, was appointed by the newly formed Park Committee at thirty shillings a week, with residence (in the park lodge) and water free.

2.3.4 Opening and Early Management

The formal opening was carried out by the Duke of Cambridge: some sources claim that the park was named to commemorate the Duke of Clarence, who had died in 1892, but it is

more likely that the name came from Blundell- Maple's London house, as did his firm's sports and music clubs. The usual speeches were made (unfortunately in the rain) and in the evening there was a great firework display. A dinner was held at the Town Hall, and the local newspaper published a special supplement, which was so popular it had to be reprinted.

The new Park Committee felt that the park would be 'absolutely self-supporting' and had reasonable grounds for anticipating 'that it will bring in a revenue which should go far to meet if not exceed the costs of maintenance of the unenclosed portion of the ground'. However, contrary to earlier hopes, expenditure soon proved higher than receipts, by £20 in 1897-8, and for the year ending March 1899 the figures were £400 for the park and recreation ground against an income of £130.

By 1927 lettings of sporting facilities in Clarence Park included: St Albans City FC; St Albans Gents' Hockey Club; Mid Herts Ladies' Lacrosse Club; Miss Sheehan's School; Clare House School and Central School for Girls for hockey and St Albans City Athletics Club. The park and recreation ground were obviously successful and well used; however, it was not until the late 1920s that public toilets were built at the corner of Clarence Road and Hatfield Road, with entrances from the park and the road.

When Clarence Park was first opened it was really on the eastern edge of the city, with only the cemetery and a few houses to the east along Hatfield Road; one comment at the time was that it was too far from the centre of town. The road that Earl Spencer demanded was soon occupied by substantial detached and semi-detached Victorian and Edwardian villas, many with front balconies overlooking the park. The development of Clarence Park and its adjacent housing was clearly one factor in the expansion of St Albans.

2.3.5 Conveyance

There are two separate deeds of conveyance that relate to Clarence Park. Both were signed on 23 July 1894 between Sir John and the Mayor Alderman and citizens of the City of St Albans.

The first conveyance relates to the Recreation Ground and states that the Ground should be held for the purposes of the Recreation Grounds Act 1859 (since superseded by the Charities Act 2011, Chapter 25) subject to a number of other reservations, restrictions and conditions set out in the conveyance. The Council is the corporate Trust and the City Neighbourhood Committee act as the Trustees.

The second conveyance relates to the Public Park and Pleasure Ground and states that it should be used for the benefit of the community of St Albans subject to a number of other reservations, restrictions and conditions set out in the conveyance. This part of the park is not covered by the Trust and is under the sole ownership of the Council.

2.3.6 Air Raid Shelter

During the second world war an underground air raid shelter was constructed to the east of the drinking fountain. This is now sealed and cannot be accessed.

2.4 Habitats and Wildlife

2.4.1 Setting

For the most part Clarence Park is a green island within St Albans. However, nearby gardens and the adjoining railway line provide some wider habitat connectivity.

2.4.2 Grassland

Much of the grass area is maintained as amenity grass for either sports activity or informal recreation. These areas are very limited in their ecological value.

Some areas have been managed as wildflower grass. This includes a bank alongside the football ground near the sensory garden and an area to the western end of the Formal Park. Now well established, these provides an impressive annual display whilst also supporting the park's wildlife.

Daffodil planting provides early colour and pollen within the Formal Park.



Wildflowers beside the sensory garden.

2.4.3 Trees

Reflecting its Victorian origin, the park contains numerous feature trees. These are primarily located around the park boundaries, alongside paths and beside roads. They are both within the formal park and around the outer edge of the recreation ground.

The Council has adopted a policy of taking every opportunity to increase the range of unusual tree species. As a result, trees vary in age from mature trees planted at the creation of the park to those planted in recent years.

Some trees around the edges of the park have become very tall and have shaded out shrub planting. This includes hollies along the southern boundary which would have originally been planted as shrubs.

2.4.4 Shrub Beds

The boundaries typically consist of shrubby borders. Due to the Victorian setting out of the park, these shrub beds are an integral feature in defining the heritage and character of the park. Reflecting the Victorian interest in horticulture they would originally have been vibrant beds, displaying a range of different ornamental plants.

Many of the shrub beds now consist of over-mature holly with little in the way of ground cover. This includes the steep bank along Hatfield Road, which is subsequently susceptible to erosion. Other shrubs borders include older woody specimens at a wide spacing. Adding little horticultural interest, these are a long way from the original design intention from when the park was first laid out.



Former shrub beds along the southern boundary that are now shaded by holly with no horticultural interest.

As a result, a phased replacement of these shrub beds has commenced in recent years. This has seen replacement of the shrubs along the eastern boundary of the formal park. These now add vibrancy through a variety of different species, whilst also providing a nectar source for insects.

The annual maintenance of these shrubs includes mulching by the grounds maintenance contractor.

2.4.4.1 *Roses*

Clarence Park is one of the few areas where the Council is able to maintain traditional rose beds, and it was evident from the public engagement that these are a highly valued feature of the park. The roses provide a colourful ornamental corner to the park. The bed includes climbing roses, which are supported on a framework that runs along the edge of one of the paths. These are subject to replacement as required to ensure they remain vibrant and attractive.

2.5 **Access, Facilities and Infrastructure**

2.5.1 **Paths**

The Formal Park consists of a path around the outer edge, with a main path through the middle and a secondary path connecting the southwest entrance to the play area. The Recreation Ground has a circular route around the main sports facilities, with secondary paths on the eastern and western edges of the park. There are several small access points where park visitors can walk between the two sides of the park, but the circulation of the two spaces work in isolation of each other.

Paths are typically at least 2m wide and constructed from tarmac. A short section of flexible paving (combined stone and recycled rubber) was installed on the path between the cricket pitch and the bowls club in early 2020. Paths are inspected by the Grounds Maintenance team on a 6-monthly basis with repair work carried out on an ad-hoc basis as required and as funding is available. The lower path to the eastern side of the Recreation Ground is in a poor condition which would require complete resurfacing rather than repair.

2.5.2 **Site Entrances**

There are six entrances into the park, each of which serve visitors arriving from different locations.

- **Main Entrance (Clarence Road):** The main vehicle entrance into the park, which leads to parking around the Cricket Pavilion. Pedestrians can access both the Formal Park and Recreation Ground from this entrance

Signage: Entrance Board

- **Bowls Club (Clarence Road):** A lockable vehicle entrance beside the Bowls Club which provides access to an informal parking area. This is not a primary pedestrian access.

Signage: None

- **Upper York Road:** The closest pedestrian entrance to the football club and the first entrance reached by those crossing the railway bridge from Lemsford Road. To reach the main part of the Recreation Ground visitors must walk along an

unattractive path shaded by adjoining vegetation and with cycleway signage that requires cleaning and updating Initiatives including wildflower planting and the Sensory Garden have improved the eastern end of this path.

Signage: Entrance Board

- Lower York Road: A smaller pedestrian entrance at the eastern end of York Road. It leads onto the path on the outer edge of the bowling green.

Signage: Entrance Board

- Hatfield Road Bridge: Located in the southwest corner of the park and leading onto the Formal Park, this is the only entrance that overcomes a change in levels. A new access ramp was installed in 2016, providing a disabled access slope as well as steps.

Signage: Entrance Board, Football Club Board

- Hatfield Road Lower: This entrance is in the southeast corner of the park adjacent to the tenanted restaurant. It leads directly onto the Formal Garden.

Signage: Entrance Board, Notice Board, Football Club Board

All pedestrian entrances have welcome boards, which are in an ornate style appropriate for the park. At the Main Entrance and Hatfield Road Lower the boards are subject to encroaching vegetation, which reduces their prominence.

Opening and closing times are displayed at the entrances. These change throughout the year and are approximately in line with dawn and dusk.

2.5.3 Boundary Fencing

With the exception of the boundary with the railway line (metal palisade), an oak palisade fence is located around the outer perimeter of the park, keeping it in character with the original construction. Gates are also constructed from oak.

2.5.4 Furniture

There are numerous benches located throughout the park. All new benches are installed to the standardised appearance used by the Council. The Council will on occasion install memorial benches, where suitable ones can be donated. Verdi's Restaurant are licenced to provide a number of picnic benches laid out in their Licence Agreement for customer and public use, set on a specially designed hard surfaced area.

There are both litter and dog waste bins located throughout the park. As dog waste can be disposed in ordinary waste bins, the Council has a non-replacement strategy for dog refuse bins. Recycling bins have gradually been introduced to the park.

2.5.5 Signage and Interpretation

There are five notice boards which display information related to management and events. An interpretation board to the south of the pavilion details the history of the park.

There are also smaller code of conduct signs for cyclists and directional sign posts.



Variety of signage present around Clarence Park

2.5.6 Sports Facilities

2.5.6.1 Fitness Station

A fitness station has been constructed to the southwest of the Formal Garden, providing outdoor gym equipment.

2.5.6.2 Artificial Turf Pitch

An artificial pitch is set out for use for hockey over winter and for tennis over summer. They can also be used informally for football. Should further croquet space be required, or year-round use, the artificial pitch can be explored as an option for use by the croquet club. Bookings for the pitch are operated by John O'Conner.

Floodlighting for the pitches is restricted for use with hockey and tennis.

2.5.6.3 Bowls Green and Clubhouse

This is situated in the north-east corner of the park. St Albans Bowling Club has a licence for the land on which their clubhouse is built. A separate lease allows them to have match day car parking on the grass area adjacent to the clubhouse, via a vehicle access point from Clarence Road separate from the main vehicle access point.

The licence is now up for renewal.

2.5.6.4 Cricket Pavilion, square and nets

The pavilion is licenced to St Albans Cricket Club. Under this licence they are required to keep the interior of the premises in good repair and decorative order, with the Council responsible for maintaining the exterior. The Council has developed a schedule of works with prioritisation for exterior repairs. A Project Board was established in 2020 to advance the repair works.

The licence is currently under review to encourage year round use.

The pavilion is primarily used by St Albans Cricket Club, as is the all-weather cricket net facility. The cricket square is maintained as part of the grounds maintenance contract.

The outer edge of the cricket pitch has metal bollards and chains, similar to those from the original park layout.

2.5.6.5 Croquet Lawn

The croquet lawn was installed in the 1980s and is mainly used by St Albans Croquet Club, though is also available for public use. In the past it has been damaged by misuse for football.

An equipment shed is located beside the lawn for use by the Croquet Club.

2.5.6.6 Football Pitch and Club House

The park has been used for football since its opening in 1894 and St Albans City Football Club have played there since 1908. The football ground includes changing rooms, spectator stands and a clubhouse. It is licenced to the football club with this open to the public (on request to the football club) for booking out the pitch and changing facilities. Public usage of this facility is, however, very infrequent.

Under the licence the football club is responsible for all management and maintenance related to the ground and buildings.

The football club has outlined aspirations to move to a new stadium and this is recognised within the St Albans Local Plan. However, at present there are no immediate plans in place for the club to relocate.



Bowls Green (left). Cricket nets & artificial turf pitch (right).

2.5.7 Catering Facilities

Verdi's Restaurant is located on the corner of Hatfield Road and Clarence Road. The restaurant is managed privately and is independent from the park, but has strong connections with the park, selling food and drink to park users, providing seating and with an open aspect onto the park contributing to security in evenings.

The licence and lease agreements are due for renewal during the period of this GAP.

2.5.8 Public Conveniences

There are two sets of public toilets, located beside the children's play area and beside the Bowling Green. The toilets have provision for disabled use. They are opened and inspected through the grounds maintenance contract, with the Council's waste management contractor responsible for the cleaning.

The toilets in the Formal Park were refurbished in April 2021.

Separate toilet facilities are located within the football ground, cricket pavilion, contractors' depot and bowls clubhouse.

2.5.9 Buildings

In addition to the bowls clubhouse, cricket pavilion, football club, public toilets and restaurant described above, there are two other buildings within the park:

- Clarence Park Lodge: This is let privately and used as a residential dwelling and children's nursery, contributing towards the income of the park
- Depot: The depot building at the north of the park, and the associated yard, are operated by John O'Conner Ltd as part of the grounds maintenance contract, who are responsible for the upkeep and maintenance of the building yard and surrounding fence.

2.5.10 Sensory Garden

The Sensory Garden was developed as part of a community project in 2008. Among its aims were developing environmental and cultural education, improving wildlife, involvement of the Asian community, providing links with schools and raising awareness of disability issues.

The garden is located in an area otherwise lacking in interest, where the narrow and shaded entranceway can be unwelcoming.

Over the years a number of the original species within the garden have been lost and some of the original timber products have begun to deteriorate.



Sensory Garden benches and raised shrub beds

2.5.11 Play Area

The play area is situated within the Formal Garden and is a later addition to the park from the original design.

Clarence at Play is a charity that was established to raise funds and redesign the play area. They successfully completed their fundraising, raising £220k. This included council moneys through the SADC City Neighbourhoods Committee. The redesigned play area with a range of modern equipment, including disabled accessible play, opened in May 2021.



Image generated in advance of construction of the new play area



Images from the completed play area



2.6 Community and Events

2.6.1 Clarence Park Consultative Forum

Direct management and decision making for the park rests with the Council. However, involvement and feedback from stakeholders provides valuable input that helps to guide the management.

The Consultative Forum was created in 1993, with the terms of reference to:

- Meet at least twice per year to discuss issues that affect Clarence Park
- Provide an active line of communication for local groups, organisations and sports clubs with an interest in the well-being and future enhancement of the park.
- Encourage and channel active support from the community and park users, through discussion of issues and dissemination of information.
- Deal with issues of mutual interest to all users and not with specific issues between individuals or parties.
- Act as a discussion group only with the views of the Forum being put forward to Committees as specific relevant issues arise.

Meetings typically take place more often than the two per year minimum stipulated in the terms of reference. The following individuals and organisations are invited to be represented at the forum: council officers, ward councillors, representatives from the various sports clubs that use the park, St Albans Civic Society, St Albans Police Community Team, Protect Clarence Park, Clarence Park Residents Association and John O'Conner (Grounds Maintenance) Ltd. Other local groups and members of the public can attend.

Minutes and agendas of previous meetings are available on the Council's website - <https://stalbans.moderngov.co.uk/ieListMeetings.aspx?CId=144&Year=0>

2.6.2 Events

There are currently no regular events that take place. Organisations or groups wishing to hold events can contact SADC - <https://www.stalbans.gov.uk/events-advice-and-guidance>

The suitability of these events are considered based on the size, character and location within the park. Please refer to section 4.4.3 on the future policy of events within the park.

3.0 AIMS & OBJECTIVES

A. Ensure the park is clean and well maintained

- A1 Regularly review grounds maintenance procedures to ensure these meet requirements
- A2 Monitor grounds maintenance contract to ensure continued implementation to a high standard
- A3 Maintain Green Flag Award status
- A4 Ensure structures and park furniture are in a good condition and that their appearance is in keeping with the park
- A5 Work with licensees and regular users to ensure all buildings remain in a safe, serviceable and attractive condition

B. Promote a healthy, safe and secure park

- B1 Ensure visitors feel safe and secure in all areas of the park
- B2 Encourage increased participation in sports and physical activities across all demographics
- B3 Maximise accessible routes and access to as many areas and facilities in the park as possible

C. Maintain a high quality provision of sport

- C1 Work with sports clubs to identify opportunities for expansion of membership and activity
- C2 Improve and upgrade existing facilities as required
- C3 Provide new facilities where a need or opportunity has been identified, where in keeping with the character of the park

D. Protect and promote the heritage of the park

- D1 Engage visitors with the heritage of the park
- D2 Implement soft landscaping that is appropriate to the historical context
- D3 Maintain the built environment and encourage wider usage to ensure their sustainable operation

E. Actively involve the community in decision making, activities and enhancements

- E1 Support events and activities of an appropriate size and character to encourage wider public enjoyment and participation, whilst taking into account the wishes of local residents and their peaceful enjoyment of the park and surroundings
- E2 Continue to update and engage the Consultative Forum

E3 Explore options for the engagement of an outside organisation within the pavilion that will benefit the community

E4 Ensure activities in the park do not add unreasonable disruption to local residents

F. Conserve habitats, improve biodiversity and promote sustainable activities

F1 Maintain existing wildflower areas and identify further opportunities for planting pollinators in support of the Council's Wilder St Albans project

F2 Appropriately manage existing trees with new planting to ensure trees of various ages and species

F3 Utilise any opportunities to reuse generated by-products arising from site

F4 Use sustainable products and practices wherever possible

G. Explore funding options for longer term enhancements

G1 Explore funding opportunities to enable the delivery of this plan

G2 Work with existing stakeholders and external organisations to deliver improvements to the pavilion and to run events that are appropriate for the park .

4.0 MANAGEMENT PRESCRIPTIONS

4.1 Geography and Landscape

4.1.1 Functionality

It was evident from the outset of the public engagement that people do not just use the Recreation Ground for organised sports and it is far from exclusively used by the sports clubs. The area is widely used by the public for more leisurely and individual activities such as dog walking and jogging on the outer paths, often using this area alongside the Formal Park.

Landscapes must be allowed to change over time to meet the ever changing needs of society, as indeed Clarence Park has in the past such as with the introduction of the play area into the Formal Park. However, to protect the heritage of Clarence Park it is vital that any changes are in-keeping with the historical landscape and the original purposes. Fundamental to this is that the two sides maintain their own distinct characters as an active space and as a calm and ornate space.

The pavilion is located at a junction between these two spaces and has the potential to serve both sides of the park. It is located in a central location and looks out in both directions. It has a Victorian design in keeping with the Formal Park, whilst it is functionally linked to the Recreation Ground.

The aspiration for the pavilion is to find use for it on top of the existing usage that would better link it in with the users of both sides of the park.

4.2 Habitats and Wildlife

4.2.1 Grassland

4.2.1.1 Amenity Grass

Close mown amenity grass will be maintained as part of the grounds maintenance contract to a specification suitable for sports activity or for informal recreation, according to its location.

Where grass has been damaged and is under repair (e.g. from wear and tear), it will be re-seeded and protected as necessary. Where located beneath trees this is to be re-seeded with a shade tolerant species mix.

4.2.1.2 Wildflower Grass

The wildflower banks beside the football club and the sections within the formal garden will continue to be maintained with an annual cut and lift to encourage the continued establishment of a diverse and attractive grassland habitat.

We will expand the existing wildflower area at the western end of the Formal Park. Alongside this we will include an enhanced amenity cut around trees in this section of the park, where grass is cut at a higher level to enable low level pollinators to flower.

4.2.1.3 *Bulbs*

Existing daffodil planting will be maintained, with these areas left out of grass cutting during the early part of the year.

Further bulb planting can be carried out, including beneath tree canopies within the Formal Park where grass has struggled to establish and also in the grass area to the west of the Pavilion. These should ideally be native or naturalised bulbs that support pollinators, such as daffodils, crocuses, snakeshead fritillaries, grape hyacinth and wood anemone. These will be placed away from desire lines with signage to discourage them from being trampled.

4.2.2 **Trees**

4.2.2.1 *Management and Replacement*

Tree risk inspections are carried out on a scheduled basis by SADC, with remedial works carried out as necessary to minimise the risk to park visitors.

As trees mature and naturally die, or need to be removed due to safety concerns, these will be replaced by new planting.

4.2.2.2 *New Tree Planting*

There is scope for new tree planting, particularly within the Formal Park. To keep these in keeping with the origins of the park these should be planted as feature trees with sufficient space to allow them to establish into large specimens with well established canopies, whilst retaining enough space and light for grass to be sustained around them. To add further interest and to showcase them as features, labels can be added to the feature trees around the park detailing the species name and their origin. These can be either physical labels on the trees or an online resource.

Tree planting is proposed along the eastern path beside Clarence Road between the main entrance and the bowls club. The available space here is smaller and would be more suited to trees such as blossoming fruit trees, which will add visual interest.

The action plan and maps (section 5) detail potential locations of new tree planting.

4.2.2.3 *Tree Health*

4.2.2.3.1 *Oak Processionary Moth*

Oak Processionary Moth (OPM) are not native to the UK and have been spreading outwards from London where there is a well-established population. The caterpillars feed on the leaves of oak trees and can strip trees bare, whilst their hairs can cause skin and eye irritations as well as breathing difficulties in people and animals.

Appendix A outlines procedures to follow if OPM is found or suspected on site.

4.2.3 Shrub Beds

Many shrub beds require re-planting. Species will be selected to provide:

- Attractive displays throughout the year
- Support to wildlife, notably pollinators
- A scheme that can be maintained within the grounds contract
- Screening where required

We will seek to include native plants within the planting mix. However, as a Victorian era ornate park we will also include non-native species where these support the required visual appearance and benefit wildlife.

The planting palette will include, but will not be limited to, the following example species:

Plant Type	Example Species	Description	Maintenance
Trees	Birch species, e.g. silver birch, Himalayan birch	Fast growing trees to provide visual end point to the park. To be used to maintain a separation from Hatfield Road. Create dappled shade that will not be prohibitive of shrub planting.	Maintenance to establishment then inclusion within tree risk assessments.
	Bird Cherry	Small, native tree with attractive blossom.	
	Blossoming fruit trees, e.g. Malus 'Evereste' or Prunus 'Kanzan'.	Ornate tree with vibrant spring colour.	
Taller Shrubs	Dogwoods Photinia x fraseri 'Red Robin' Cotinus 'Grace' Choisya x dewitteana Stachys Byzantina Corylus avellana	Offer varying colour throughout different seasons.	Upon establishment require coppice dogwood on rotation every 3 years. Shrubs maintain to establishment and prune back when necessary.

	Crataegus monogyna		
Smaller Plants	Rudbeckia fulgida 'Goldstrum' Perovskia 'Blue Spire' Lavendula angustifolia	Addition of colour and vibrance throughout the year. Flowering species provide a useful source of nectar for insects. Seeds provide food source for birds.	Low maintenance plant. Planting of perennial variety to reduce future requirements.

The refreshing of shrub beds will be phased throughout the course of the plan. Full completion of the planting scheme is likely to require external funding. If this cannot be obtained, works will proceed from available budgets, carried out over a longer timeframe.

4.3 Access, Facilities and Infrastructure

4.3.1 Paths

4.3.1.1 Programme of Repair Works

A six monthly review will be carried out to determine requirements for path repairs. This will be determined based upon the needs and on available budgets. Priority will be given to sections in greatest need of repair.

A section of flexible paving was installed in 2020 and is being reviewed to see how well it performs. If it is deemed to be a resilient and effective option it will be used when in proximity to tree roots. Elsewhere surfacing will be repaired with tarmacadam.

4.3.1.2 Path to eastern side of Recreation Ground

Along the eastern boundary of the park between the main entrance and the bowls club there are two paths running broadly parallel to each other but at different heights. The primary route for use and for access to the sports facilities is the inside path.

The outer path functions has a quieter and calmer alternative to the upper route, but has a deteriorating surface and largely uninteresting planting. To differentiate it from the adjoining path and to add interest, ornate, blossoming fruit tree planting will be introduced in place of many of the existing municipal shrubs. Fruit tree planting would be focussed on existing gaps where there are no existing trees, particularly along the roadside. Native, shade tolerant shrubs can be added around existing trees to support wildlife, including hazel and hawthorn. As the route is not a direct, functional connection, it can be resurfaced as a crushed granite path.



Path on the eastern perimeter with breaking surface and little horticultural interest

4.3.1.3 Review of Cycle Routes

The existing cycle routes within the park, and the associated signage, will be reviewed and updated to ensure these provide direct and functional routes for cycling whilst ensuring safe and enjoyable use of the park.

4.3.2 Site Entrances

4.3.2.1 Signage

The entrance board at York Road Lower will be repositioned immediately adjacent to the notice board. This will provide greater prominence and create a more coherent appearance. vegetation pruned back on at least an annual basis to ensure good visibility.

4.3.3 Boundary Fencing

The replacement of boundary fencing will be continued with an annual review of requirements. This will typically involve replacement of 15-20 panels per year, but may vary based on available budgets and requirements.

4.3.4 Furniture

A Maintenance & Renewal Plan will be produced by the Property & Asset Management Team for the furniture within the park to give a structured approach to renewal.

This will include any updates to the palisade perimeter fencing, which is now typically being replaced in large sections at a time rather than as ad hoc repair.

Benches and bins will also periodically require replacement. These will be monitored as part of the grounds maintenance contract with damage or deterioration reported to the Council. They will be replaced in line with the standardised appearance across SADC parks.

Cycle stands can be incorporated within the park close to the pavilion. These should be positioned appropriately for any future use of the pavilion building.

4.3.5 Signage and Interpretation

The existing signage and interpretation will be checked within routine inspections and cleaned as required.

Cycle code of conduct signage will be updated as required following a review of cycle routes.

4.3.6 Sports Facilities

4.3.6.1 Pavilion

4.3.6.1.1 Licence Arrangements

A new licence is to be agreed between the Council and the cricket club. This will cover items such as maintenance responsibility and allow the flexibility required for future changes.

4.3.6.1.2 Repair Works

Requirements for repairs to the building have been identified in a separate condition report. Items have been given approximate costings and assigned a priority rating. Repairs will be carried out in accordance with this plan.

4.3.6.1.3 Future Management

The eventual aspiration is for an external organisation to utilise the pavilion in a way that will provide funding for its future maintenance. This could include a social enterprise operation or any other organisation that meets the following criteria:

- Complies with all relevant deeds, covenants and licence agreements
- Operate alongside and in support of existing groups, including the cricket club
- Supports the upkeep of the building in a sustainable way
- Does not conflict with the character and historic purposes of the park. This is to include avoiding commercialisation.
- Improves the experience of visitors to the park

4.3.6.2 Future Upgrades to Sports Facilities

The current sports will be reviewed if there is a clear desire for change or for additional provision. New provision can only be accommodated where there is funding, adequate space and where there is a plan in place for the facilities to be sustainably funded and managed. The appearance of any facilities should be appropriate for the park's character. Any new provision should be located in the Recreation Ground rather than the Formal Park.

Should the football club relocate in future, a new masterplan would be developed for this space considering its best use, interconnectivity with the surrounding park and meeting the needs of deeds and covenants in place.

4.3.7 Sensory Garden

The sensory garden will be reviewed alongside the shrub beds, with new planting introduced to reinvigorate the appearance. Deteriorating benches and other features will be removed or replaced where required.

4.4 Community and Events

4.4.1 Staff Presence/ Presence of Authorities

A regular staff presence will continue to be maintained in the park through the grounds maintenance contract to ensure a high standard of maintenance and to improve the feeling of safety for visitors.

The Council will work with the police wherever possible to reduce crime and antisocial behaviour, encouraging the reporting of any incidents.

CCTV has been installed on both sides of the park that link directly to the main control room.

4.4.2 Clarence Park Consultative Forum

The Consultative Forum will remain the main channel for engaging with stakeholders and the group will receive updates as the plan is progressed.

4.4.3 Events

Any hirer of the space would first approach the Community Engagement Team at St Albans City and District Council, who would assess the application alongside Ward Councillors. Part of any fee payable would be made available for use by the community. Note that any such activity, including event build and de-rig, would only be able to take place on the 28 days in any given year allowed for 'Permitted Development'.

Clarence Park can be suitable for events of a specific size and type that is reflective of the character of the park, such as crafts events and small daytime band performances. To ensure these are to an appropriate scale, events will be expected to meet the following criteria:

- The park should remain open, with no areas excluded for the public
- Should not generate a noise nuisance that would disrupt the day to day enjoyment of the park, or a noise nuisance in late evenings that would impact upon residential areas

- Damage or wear to the park landscape or facilities will be rectified by the event organiser

Many of these events are likely to be held within the Formal Park due to the open green space here. Consideration of the character of the event will account for its location in the park prior to being approved.

Events may also be held within the football club and this may be a more suitable option for those that are more private in nature.

All events should follow the District Council's policies for holding events.

5.0 ACTION PLANS AND MAPS

5.1 Annual and Regular Actions

Ref no.	Action	Obj. Ref	When	Lead	Delivery	Funding	Est. Cost	Review
0.1	Ground maintenance (grass cutting, bin emptying etc)	A1, A2, A3	-	GM	GM	GM budget	-	Ongoing
0.2	Tree Risk Assessments	B1, F2	Every three years	SADC	SADC	SADC	-	Ongoing
0.3	Review and action path repairs	A3, B3	Six monthly	SADC	Contractor	SADC	-	Ongoing
0.4	Review bins and benches. Repair and replace as required.	A3	As required	SADC	GM	SADC	-	Ongoing
0.5	Replacements within rose beds as required	A3, D2	As required	SADC	GM	SADC	-	Ongoing
0.6	Annual review and replacement of perimeter fencing	A4	Any	SADC	Contractor	SADC		Ongoing
0.7	Review requests for events on a case by case basis	D1, E1	As required	SADC	SADC	-	-	Ongoing

5.2 Year 1 2022-23

Ref no.	Action	Obj. Ref	When	Lead	Delivery	Funding	Est. Cost	Review
1.1	Year 1 shrub re-planting	D2	Autumn/ Winter	CMS/ SADC	Contractor/ GM	SADC/ External	£10,000	Herbaceous beds outside lodge renewed, otherwise subject to funding
1.2	Planting of feature trees	F2	Autumn/ Winter	CMS/ SADC	Contractor/ GM/ Volunteers	SADC/ External	£1,500	As per SADC tree strategy every tree felled is replaced, additional planting subject to funding
1.3	Introduce tree labels	D1	Any	CMS/ SADC	CMS	SADC	£500	In place of this, introduced tree trail (on website and in noticeboard)
1.4	Year 1 shrub clearance and tree planting along eastern path	F2	Autumn/ Winter	CMS/ SADC	Contractor/ GM	SADC/ External	£5,000	Delayed subject to funding
1.5	Bulb planting and wildflower expansion	F1	Autumn	SADC	Contractor/ GM	SADC	£1,500	Bulbs and woodland wildflowers planted – monitor success
1.6	Reposition Hatfield Road signage	A4	Any	SADC	Contractor/ GM	SADC	£250	Not required. Pedestrian and speed signage to be replaced.
1.7	Agree new licence agreements for pavilion and bowls clubhouse	A5	Any	SADC	Officers	-	-	In progress
1.8	Development of brief for pavilion. Explore options with existing users.	E3, G2	Any	SADC/ CMS	Officers	-	-	Pavilion refurbishment complete. STCC use throughout year
1.9	Support Verdi's to develop designs and implement an updated area surrounding the restaurant.	A5	Any	Verdi's Restaurant, SADC	Restaurant	Restaurant	-	Not progressed, area reseeded and fence to be installed

1.10	Develop Maintenance & Renewal Plan	A4, B3	Any	SADC	Officers	-	-	Not completed
------	------------------------------------	--------	-----	------	----------	---	---	---------------

5.3 Year 2 2023-24

Ref no.	Action	Obj. Ref	When	Lead	Delivery	Funding	Est. Cost	Review
2.1	Year 2 shrub re-planting	D2	Autumn/ Winter	CMS/ SADC	Contractor/ GM	SADC/ External	£10,000	As above
2.2.	Planting of feature trees	F2	Autumn/ Winter	CMS/ SADC	Contractor/ GM/ Volunteers	SADC/ External	£1,500	As above
2.3	Year 2 shrub clearance and tree planting along eastern path	F2	Autumn/ Winter	CMS/ SADC	Contractor/ GM	SADC/ External	£5,000	Some fruit tree planting completed
2.4	Designs for building surrounds and development of detailed specification. Seek funding as required.	E3, G2	Any	CMS/ SADC	Officers	-	-	Not progressed, subject to external funding
2.5	Resurfacing along eastern path	B3	Any	CMS/ SADC	Contractor	SADC/ External	£20,000	Not progressed, subject to external funding

5.4 Year 3 2024-25

Ref no.	Action	Obj. Ref	When	Lead	Delivery	Funding	Est. Cost	Review
3.1	Year 3 shrub re-planting	D2	Autumn/ Winter	CMS/ SADC	Contractor/ GM	SADC/ External	£10,000	As above
3.2	Planting of feature trees	F2	Autumn/ Winter	CMS/ SADC	Contractor/ GM/ Volunteers	SADC/ External	£1,500	As above
3.3	Year 3 shrub clearance and tree planting along eastern path	F2	Autumn/ Winter	CMS/ SADC	Contractor/ GM	SADC/ External	£2,500	As above
3.4	Year 3 (or upon adequate funding) – procure service provider for pavilion	D3, E3, G2	Any	CMS/ SADC	Officers	-	-	STCC
3.5	Establish cycle parking in vicinity of pavilion	B3	Any	SADC	Contractor/ GM	SADC	£1,000	Complete
3.6	Review cycle routes and update signage	B1, B3	Any	SADC	Officers	SADC	£1,000	In progress. Due to be completed March/April 2026

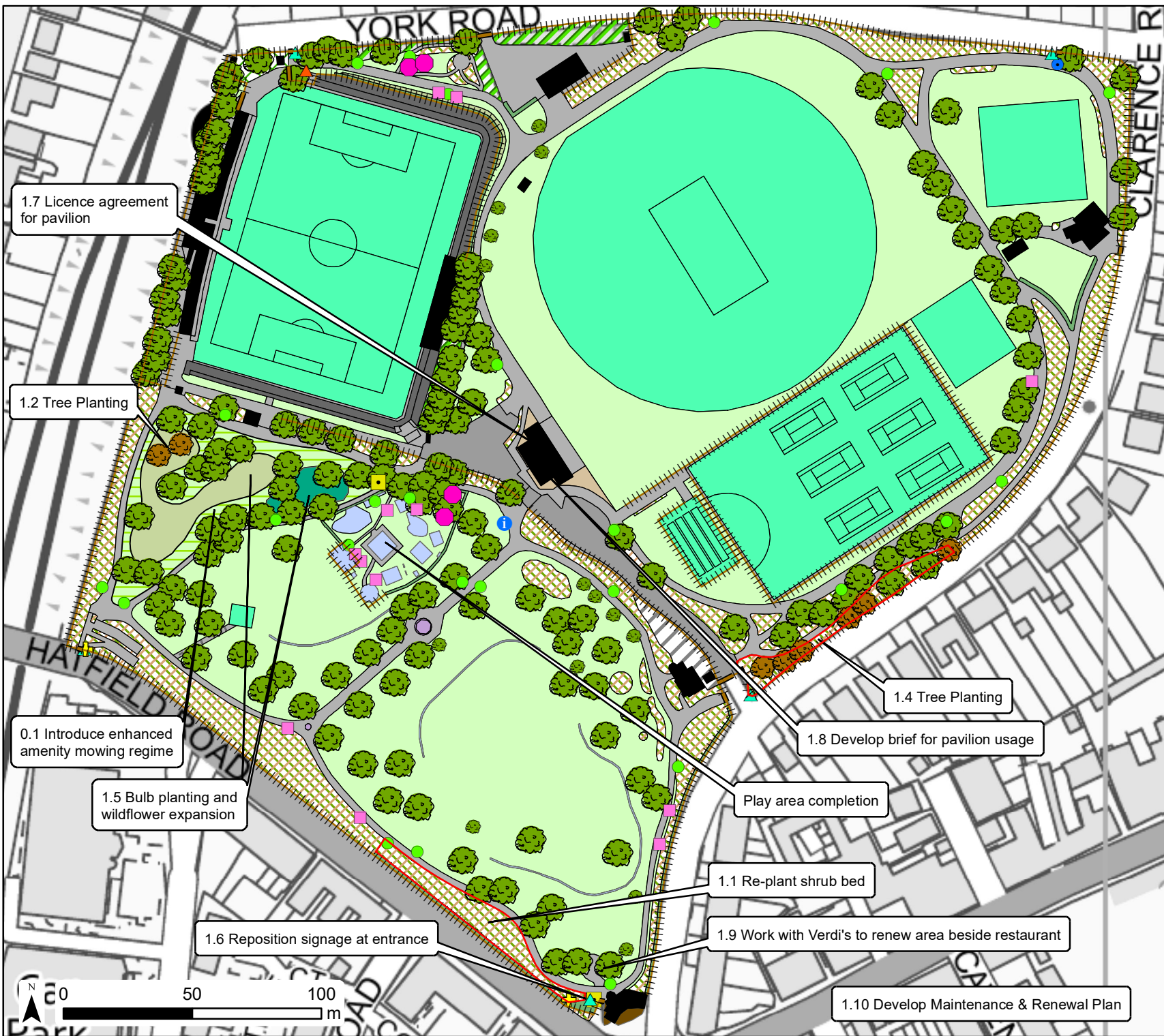
5.5 Year 4 2025-26

Ref no.	Action	Obj. Ref	When	Lead	Delivery	Funding	Est. Cost	Review
4.1	Year 4 shrub re-planting to Sensory Garden, with replacement of structures as required.	D2	Autumn/ Winter	CMS/ SADC	Contractor/ GM	SADC/ External	£2,500	Repair of some of the structures scheduled
4.2	Planting of feature trees	F2	Autumn/ Winter	CMS/ SADC	Contractor/ GM/ Volunteers	SADC/ External	£1,500	As above
4.3	Bulb planting to the west of the pavilion	F1	Autumn	SADC	Contractor/ GM	SADC	£1,500	Not completed

5.6 Year 5 2026-27

Ref no.	Action	Obj. Ref	When	Lead	Delivery	Funding	Est. Cost	Review
5.1	Year 5 shrub re-planting	D2	Autumn/ Winter	CMS/ SADC	Contractor/ GM	SADC/ External	£10,000	
5.2	Planting of feature trees	F2	Autumn/ Winter	CMS/ SADC	Contractor/ GM/ Volunteers	SADC/ External	£1,500	

Clarence Park Greenspace Action Plan Year 1 Action Plan



Legend

Amenity Grass	Entrance Sign
Building	Bin
Bulb Planting	Young Tree
Bulbs	Established Tree
Enhanced Amenity	
Hedgerow	
Heritage	
Play	
Private Garden	
Resin Surface	
Restaurant	
Scrub	
Sealed Surface	
Shrub Bed	
Sports Pitch	
Terrace	
Tree Cover	
Unbound Surface	
Vehicle Access	
Wildflower	

Feature

- Fence
- Gate

Item

- New Tree Planting
- Bench
- Code of Conduct Sign
- Notice Board
- Waymarking
- Picnic bench
- Interpretation
- Football Club Sign

Annual Management
 Review of path repair requirements
 Review bins and benches requiring repair/ replacement
 Grounds Maintenance
 Tree Risk Assessments

Scale @ A4
 1:2,000
 Date
 Mar 2022
 Rev
 00



© Crown copyright and database rights 2022 OS EUL 100019606. Use of this data is subject to https://www.gov.uk/government/uploads/system/uploads/attachment_data/file/100019606/OS-Data-Usage-Conditions.pdf. You are permitted to use this data solely to enable you to respond to, or interact with, the organisations that provided you with the data. You are not permitted to copy, sub-licence, distribute or sell any of this data to third parties in any form.

1.7 Licence agreement for pavilion

1.2 Tree Planting

0.1 Introduce enhanced amenity mowing regime

1.5 Bulb planting and wildflower expansion

1.6 Reposition signage at entrance

1.1 Re-plant shrub bed

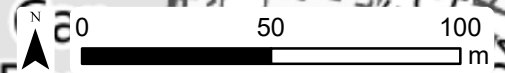
1.9 Work with Verdi's to renew area beside restaurant

1.4 Tree Planting

1.8 Develop brief for pavilion usage

Play area completion

1.10 Develop Maintenance & Renewal Plan



Clarence Park Greenspace Action Plan Year 2 Action Plan

- Legend
- | | |
|----------------------|------------------|
| Amenity Grass | Entrance Sign |
| Building | Bin |
| Bulb Planting | Young Tree |
| Bulbs | Established Tree |
| Enhanced Amenity | |
| Hedgerow | |
| Heritage | |
| Play | |
| Private Garden | |
| Resin Surface | |
| Restaurant | |
| Scrub | |
| Sealed Surface | |
| Shrub Bed | |
| Sports Pitch | |
| Terrace | |
| Tree Cover | |
| Unbound Surface | |
| Vehicle Access | |
| Wildflower | |
| Feature | |
| Fence | |
| Gate | |
| Item | |
| Year 1 Tree | |
| Year 2 Tree | |
| Bench | |
| Code of Conduct Sign | |
| Notice Board | |
| Waymarking | |
| Picnic bench | |
| Interpretation | |
| Football Club Sign | |

2.2 Tree Planting

2.3 Tree Planting

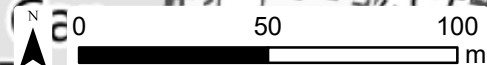
2.5 Resurface path

2.4 Develop designs for building surrounds

2.1 Re-plant shrub bed

Annual Management
 Review of path repair requirements
 Review bins and benches requiring repair/ replacement
 Grounds Maintenance
 Tree Risk Assessments

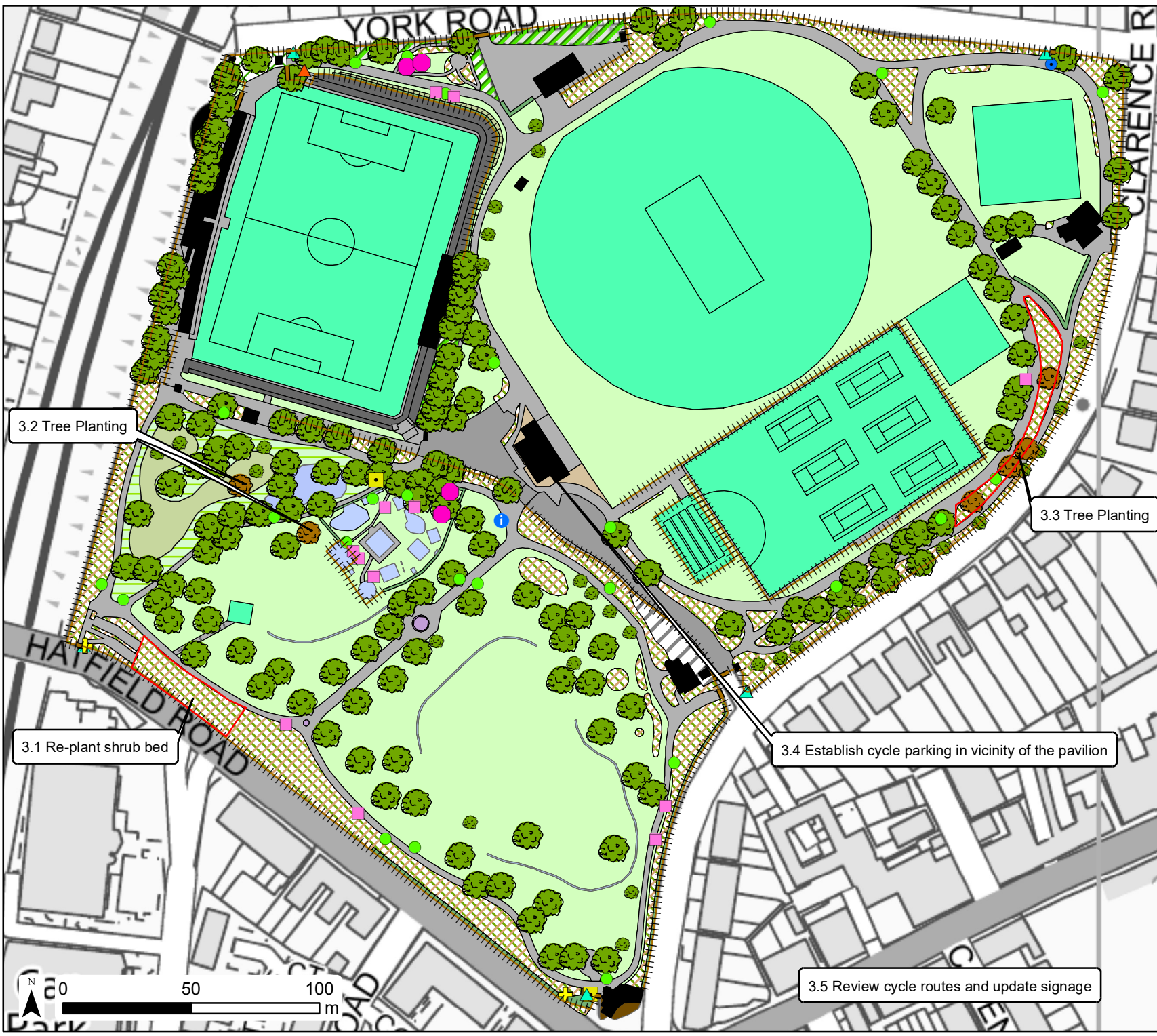
Scale @ A4
 1:2,000
 Date
 Jan 2022
 Rev
 00



© Crown copyright and database rights 2022 OS EUL 100019606. Use of this data is subject to https://www.gov.uk/government/uploads/system/uploads/attachment_data/file/100019/2022-03-01-OS-Open-Data-License.pdf. You are permitted to use this data solely to enable you to respond to, or interact with, the organisations that provided you with the data. You are not permitted to copy, sub-licence, distribute or sell any of this data to third parties in any form.

Clarence Park Greenspace Action Plan Year 3 Action Plan

- Legend**
- | | |
|------------------|--------------------|
| Amenity Grass | Football Club Sign |
| Building | Entrance Sign |
| Bulb Planting | Bin |
| Bulbs | Young Tree |
| Enhanced Amenity | Established Tree |
| Hedgerow | |
| Heritage | |
| Play | |
| Private Garden | |
| Resin Surface | |
| Restaurant | |
| Scrub | |
| Sealed Surface | |
| Shrub Bed | |
| Sports Pitch | |
| Terrace | |
| Tree Cover | |
| Unbound Surface | |
| Vehicle Access | |
| Wildflower | |
- Feature**
- Fence
 - Gate
- Tree**
- Year 1 Tree
 - Year 3 Tree
 - Year 2 Tree
- Other**
- Bench
 - Code of Conduct Sign
 - Notice Board
 - Waymarking
 - Picnic bench
 - Interpretation



3.2 Tree Planting

3.1 Re-plant shrub bed

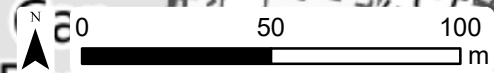
3.3 Tree Planting

3.4 Establish cycle parking in vicinity of the pavilion

3.5 Review cycle routes and update signage

Annual Management
 Review of path repair requirements
 Review bins and benches requiring repair/ replacement
 Grounds Maintenance
 Tree Risk Assessments

Scale @ A4
 1:2,000
 Date
 Mar 2022
 Rev
 00



© Crown copyright and database rights 2022 OS EUL 100019606. Use of this data is subject to https://www.gov.uk/government/uploads/system/uploads/attachment_data/file/100019606/OS-Data-Access-Conditions.pdf. You are permitted to use this data solely to enable you to respond to, or interact with, the organisations that provided you with the data. You are not permitted to copy, sub-licence, distribute or sell any of this data to third parties in any form.

Clarence Park Greenspace Action Plan Year 4 Action Plan



4.1 Refresh planting within Sensory Garden

4.3 Bulb Planting

4.2 Tree Planting

Legend

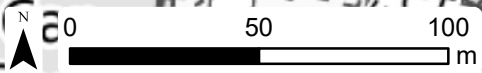
Amenity Grass	Interpretation
Building	Football Club Sign
Bulb Planting	Entrance Sign
Bulbs	Bin
Enhanced Amenity	Young Tree
Hedgerow	Established Tree
Heritage	
Play	
Private Garden	
Resin Surface	
Restaurant	
Scrub	
Sealed Surface	
Shrub Bed	
Sports Pitch	
Terrace	
Tree Cover	
Unbound Surface	
Vehicle Access	
Wildflower	
Feature	
Fence	
Gate	
Item	
Year 1 Tree	
Year 3 Tree	
Year 2 Tree	
Year 4 Tree	
Bench	
Code of Conduct Sign	
Notice Board	
Waymarking	
Picnic bench	

Annual Management
 Review of path repair requirements
 Review bins and benches requiring repair/ replacement
 Grounds Maintenance
 Tree Risk Assessments

Scale @ A4
 1:2,000
 Date
 Mar 2022
 Rev
 00



© Crown copyright and database rights 2022 OS EUL 100019606. Use of this data is subject to https://www.gov.uk/government/uploads/system/uploads/attachment_data/file/100019606/OS-Data-Usage-Conditions.pdf. You are permitted to use this data solely to enable you to respond to, or interact with, the organisations that provided you with the data. You are not permitted to copy, sub-licence, distribute or sell any of this data to third parties in any form.



Clarence Park Greenspace Action Plan Year 5 Action Plan

Legend

Amenity Grass	Picnic bench
Building	Interpretation
Bulb Planting	Football Club Sign
Bulbs	Entrance Sign
Enhanced Amenity	Bin
Hedgerow	Young Tree
Heritage	Established Tree
Play	
Private Garden	
Resin Surface	
Restaurant	
Scrub	
Sealed Surface	
Shrub Bed	
Sports Pitch	
Terrace	
Tree Cover	
Unbound Surface	
Vehicle Access	
Wildflower	

Feature

- Fence
- Gate

Item

- Year 1 Tree
- Year 3 Tree
- Year 2 Tree
- Year 4 Tree
- Year 5 Tree
- Bench
- Code of Conduct Sign
- Notice Board
- Waymarking

Annual Management
 Review of path repair requirements
 Review bins and benches requiring repair/ replacement
 Grounds Maintenance
 Tree Risk Assessments

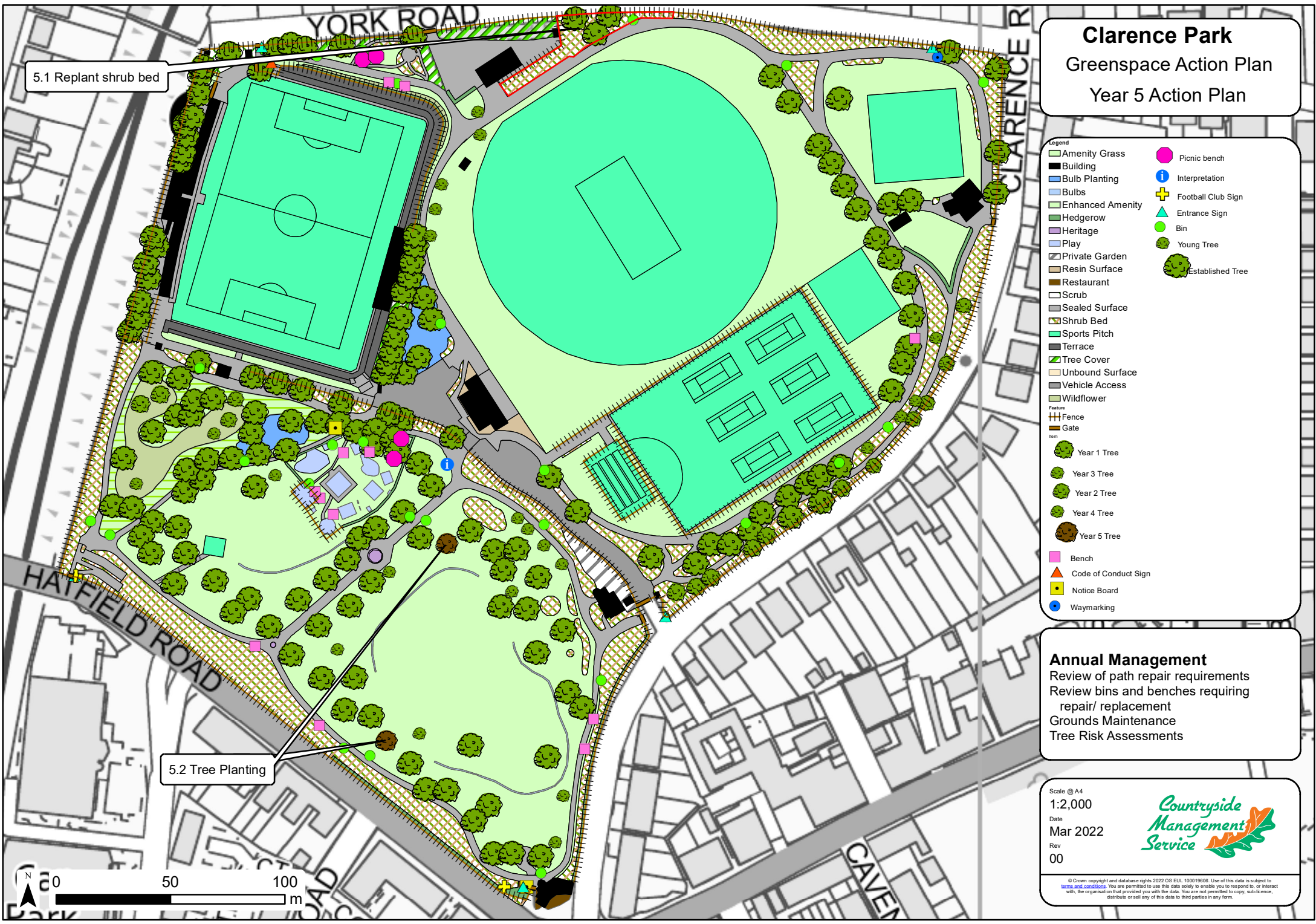
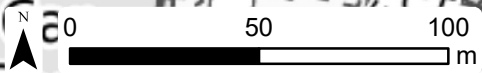
Scale @ A4
 1:2,000
 Date
 Mar 2022
 Rev
 00



© Crown copyright and database rights 2022 OS EUL 100019606. Use of this data is subject to https://www.gov.uk/government/uploads/system/uploads/attachment_data/file/101371/OS-Open-Data-License-2019.pdf. You are permitted to use this data solely to enable you to respond to, or interact with, the organisations that provided you with the data. You are not permitted to copy, sub-licence, distribute or sell any of this data to third parties in any form.

5.1 Replant shrub bed

5.2 Tree Planting



6.0 APPENDICES

6.1 Appendix A: Oak Processionary Moth Procedures

If OPM is suspected on site:

If a potential OPM sighting is identified on site, either through the course of regular inspections, maintenance activities or reported by a third party or member of the public, the following actions will be taken within the first 48 hours:

1. The exact location will be recorded and photographs of observable caterpillars, nests and webbing will be obtained and sent to the Forestry Commission (FC) for official identification.

Email: OPM@forestrycommission.gov.uk

2. Notices will be posted at prominent access points and close to the location of the sighting to alert people accessing the site to the possible presence of OPM.

Link: [../OPMPublicInformationPoster_06APR16_print.pdf](#)

3. Relevant partners will be informed to ensure that activities are conducted safely or cancelled where necessary.
4. The specific location of the sighting will be assessed with consideration to the typical use of the site. If OPM is identified within close proximity to areas assessed as posing a high risk of public contact then additional precautions such as additional signage or temporary fencing will be taken to reduce the risk of public contact with OPM caterpillars and nests.

Once OPM is confirmed on site

If OPM is confirmed on site by the FC – either a) following submission of photos from a suspected sighting to the FC or b) through the FC issuing a statutory plant health notice following OPM identification as part of the FC's monitoring programme – then appropriate control measures will be determined within five working days of the FC's confirmed identification.

Initial OPM control measures

While this document outlines the intended process for OPM control this may be adjusted in line with additional instructions included in the statutory plant health notice issued by the FC.

The OPM infestation will be assessed using the following criteria:

- If the infestation is found in areas where limited insecticide spraying is considered acceptable and is discovered in time to complete spraying before caterpillar development renders it resistant to the insecticide (late-May), then spraying represents the best control to limit further advancement of the population.
- If the infestation is found in areas where limited insecticide spraying is considered acceptable but is discovered after caterpillar development renders it resistant to the

insecticide (late-May), then spraying in the current season does not represent a viable control to limit further advancement of the population. In this case nest removal should be conducted if a) the infestation is discovered prior to moth emergence (late-July to mid-August), or b) if nests are in close proximity to high risk areas. Insecticide spraying should then be conducted within acceptable areas the following season.

Following assessment, if spraying in the current season or nest removal is appropriate then a suitably qualified and experienced arborist will be instructed to take appropriate action as soon as possible (typically within five working days). Arborists will be required to conduct insecticide spraying, nest removals and waste disposal in line with FC guidance as set out in chapters 6-7 of the OPM Manual.

Chapter 6: <https://www.forestresearch.gov.uk/tools-and-resources/pest-and-disease-resources/oak-processionary-moth-thaumetopoea-processionea/opm-manual-6-chemical-control-larvae/>

Chapter 7: <https://www.forestresearch.gov.uk/tools-and-resources/pest-and-disease-resources/oak-processionary-moth-thaumetopoea-processionea/opm-manual-7-manual-removal-nests-and-larvae/>

Subsequent OPM control measures

Based on current FC policy and practice, sites of OPM infestations within the 'control zone' (encompassing the entire county of Hertfordshire) are typically included in the FC's inspection and insecticide spraying programme for two seasons following the initial discovery. The FC informs landowners that are to be included in this programme by February of each year. The FC will be contacted (if no communication has been received) by late-February in the two seasons following the initial discovery to confirm whether the site is to be included in the programme. If the site is not included in the FC's programme then a suitably qualified and experienced arborist will be engaged to conduct insecticide spraying following caterpillar emergence.

Whether insecticide spraying is conducted by the FC or by an appointed arborist the contractors will be required to operate in accordance with FC guidance (outlined above).

Once insecticide spraying has occurred, a suitably qualified and experienced arborist can be instructed to carry out nest removal. This will be conducted only when nests are in close proximity to high risk areas.

Following two seasons of spraying the FC will be consulted to confirm whether OPM has been successfully eradicated from the site. If OPM is still present the FC will be consulted on appropriate future action.