



1 Ground Floor

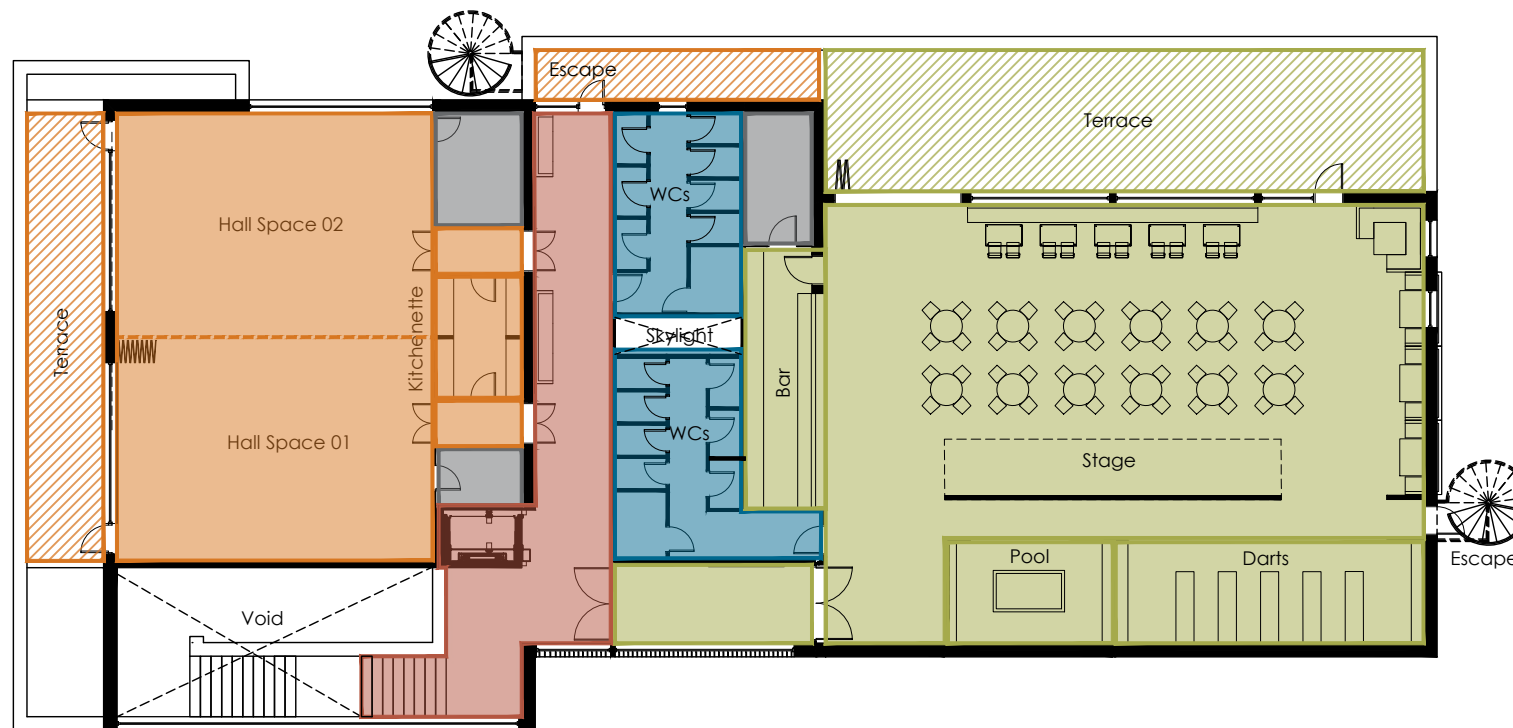
- Entrance and Circulation
- Community Use
- Cafe
- Changing rooms
- Social Club
- Office
- WCs
- Plant and Storage

Gross Internal Areas:

Ground Floor - 920m²

First Floor - 680m²

Total - 1600m²



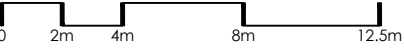
2 FirstFloor

black

Black Architecture
London
EC2A 3LP
033 3311 0221
black-architecture.com



NORTH



If received electronically it is the recipients responsibility to print to the correct scale. Only written dimensions should be used. Any errors or discrepancies should be reported to the architect. All information ©2022 Black Architecture Limited.

Notes:

Rev	Date	Amended	Checked	Details
A	11.06.2026	Plan amended	PB	

New Greens St Albans

Proposed Plans
Reduced cafe

PLANNING

Drawn	Checked	Date	Scale
PB	SB	28.04.2026	1:250 @A3
Project	Status	Stage	Number
0673	SD	2	140
			Revision
			A