

# Your Council Tax explained

## Your total bill includes Council Tax for:

- Herts County Council • St Albans City and District Council
- Herts Police and Crime Commissioner • Town and Parish Councils

## For every £1 you pay in Council Tax

Hertfordshire County Council will get **77p Total £120.7m**

Hertfordshire Police and Crime Commissioner will get **11p Total £18.2m**

St Albans City and District Council will get **9p Total £14.0m**

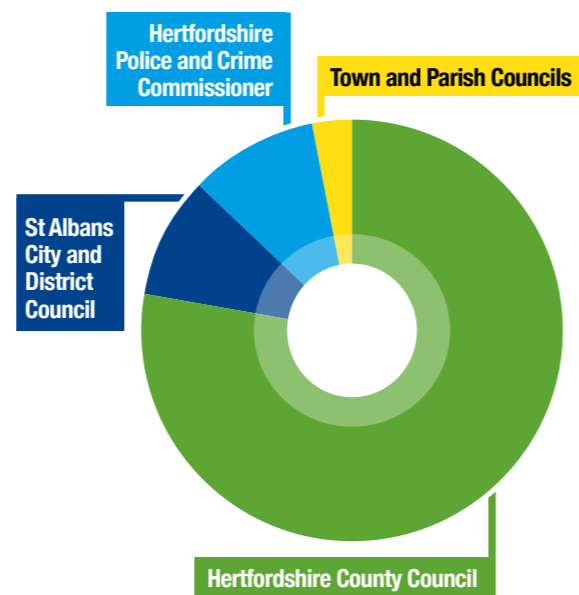
Town and Parish Councils will get **3p Total £4.3m**

On average, you will pay just **£4.12 a week** for all the services provided by your District Council including:

- Refuse and various recycling services
- Leisure, cultural and community centres
- Parks and sports facilities
- Street cleaning
- Museums
- Parking control
- Planning and enforcement
- Housing and benefit advice
- Tackling crime and nuisances like fly-tipping and noise
- Elections
- Sustainability initiatives
- Food, health and safety inspectors

Our four key priorities, designed to deliver a viable, happy, inclusive and sustainable community, are to:

- Support great communities
- Improve social housing provision
- Make the environment a priority in all our decisions
- Treat everyone with fairness



## How Council Tax is calculated

The Council's funding comes from a number of sources including Council Tax. The Council's gross expenditure of £58.9m is the main determinant of the level of Council.

Expenditure and Income Summary	2025/26		2026/27	
	£m	Council Tax Band (D) £	£m	Council Tax Band (D) £
St Albans City and District Council budget expenditure	£45.6m	£705.24	£58.9m	£906.29
Plus contribution to reserves	+£1.2m	+£18.24	+£1.4m	+£20.78
<b>Total Gross Expenditure for Council Activities</b>	<b>£46.8m</b>	<b>£723.48</b>	<b>£60.3m</b>	<b>£927.07</b>
LESS income from fees, charges, sales, rent, grants	-£25.1m	-£388.75	-£37.4m	-£575.68
<b>St Albans City &amp; District Council net budget</b>	<b>£21.7m</b>	<b>£334.73</b>	<b>£22.9m</b>	<b>£351.39</b>
<b>LESS funding from elsewhere</b>				
Central Government, Business Rates, and Collection Fund Surplus	-£8.2m	-£126.73	-£8.9m	-£137.17
<b>Total funding from elsewhere</b>	<b>-£8.2m</b>	<b>-£126.73</b>	<b>-£8.9m</b>	<b>-£137.17</b>
<b>Council Tax – St Albans City &amp; District Council</b>	<b>£13.5m</b>	<b>£208.00</b>	<b>£14.0m</b>	<b>£214.22</b>
<b>PLUS</b>				
Town and Parish Precepts	£4.1m	£63.08	£4.3m	£66.81
Hertfordshire County Council Precept	£114.4m	£1,769.87	£120.7m	£1,858.19
Hertfordshire Police and Crime Commissioner Precept	£17.1m	£265.00	£18.2m	£280.00
<b>Total Council Tax</b>	<b>£149.1m</b>	<b>£2,305.95*</b>	<b>£157.2m</b>	<b>£2,419.22*</b>

\* This is the average rate of Council Tax across the District. The actual charge will vary between areas. See box on page 5.

# What you pay

PARISH	BAND	A	B	C	D	E	F	G	H
St Albans City		1,578.90	1,842.06	2,105.21	2,368.36	2,894.66	3,420.96	3,947.26	4,736.72
Colney Heath		1,665.63	1,943.24	2,220.85	2,498.45	3,053.66	3,608.87	4,164.08	4,996.90
Harpenden Rural		1,582.04	1,845.71	2,109.39	2,373.06	2,900.41	3,427.75	3,955.10	4,746.12
Harpenden Town		1,638.78	1,911.92	2,185.05	2,458.18	3,004.44	3,550.70	4,096.96	4,916.36
London Colney		1,646.88	1,921.36	2,195.85	2,470.32	3,019.28	3,568.24	4,117.20	4,940.64
Redbourn		1,648.92	1,923.75	2,198.58	2,473.39	3,023.03	3,572.67	4,122.31	4,946.78
St Michael		1,573.68	1,835.96	2,098.25	2,360.52	2,885.08	3,409.64	3,934.20	4,721.04
St Stephen		1,638.91	1,912.07	2,185.22	2,458.37	3,004.67	3,550.98	4,097.28	4,916.74
Sandridge		1,620.89	1,891.03	2,161.19	2,431.33	2,971.63	3,511.92	4,052.22	4,862.66
Wheathampstead		1,639.43	1,912.67	2,185.92	2,459.15	3,005.63	3,552.10	4,098.58	4,918.30

## % Change from last year

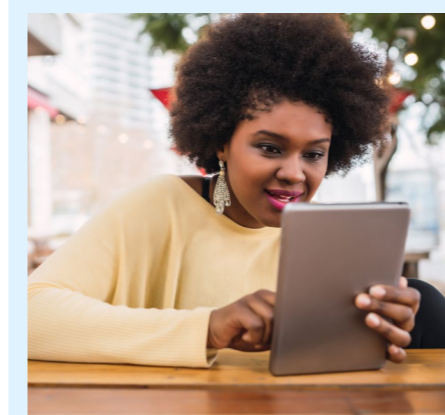
PARISH	St Albans City & District Council - General Expenses#	St Albans City & District Council - Special Expenses (see box at bottom of page)#	Hertfordshire County Council*	Hertfordshire Police & Crime Commissioner	Town & Parish Councils
St Albans City	3.75%	2.51%	4.99%	5.66%	-
Colney Heath	3.75%	-7.00%	4.99%	5.66%	2.99%
Harpenden Rural	3.75%	-	4.99%	5.66%	-3.76%
Harpenden Town	3.75%	5.91%	4.99%	5.66%	4.32%
London Colney	3.75%	-71.33%	4.99%	5.66%	9.43%
Redbourn	3.75%	-93.80%	4.99%	5.66%	10.98%
St Michael	3.75%	-	4.99%	5.66%	4.00%
St Stephen	3.75%	-34.82%	4.99%	5.66%	6.00%
Sandridge	3.75%	7.73%	4.99%	5.66%	7.37%
Wheathampstead	3.75%	-66.93%	4.99%	5.66%	4.46%

The County Council precept includes a levy on behalf of Lee Valley Regional Park Authority and the Environmental Agency. Details of the levy are available on their website [www.hertfordshire.gov.uk](http://www.hertfordshire.gov.uk)

# The percentage change on the combined total of General and Special Expenses for St Albans City and District Council is 2.99%

\* Hertfordshire County Council's element of council tax has increased by 4.99%, of which 2.00% is attributable to the Adult Social Care precept and 2.99% to general expenditure. Information about spending by Hertfordshire County Council is available at: [www.hertfordshire.gov.uk/counciltax](http://www.hertfordshire.gov.uk/counciltax) Email: [contact@hertfordshire.gov.uk](mailto:contact@hertfordshire.gov.uk) Telephone: 0300 123 4040.

Further information about Council Tax and how it is calculated is available at [www.stalbans.gov.uk/council-tax](http://www.stalbans.gov.uk/council-tax)



### Charges, and why they vary between areas

St Albans City and District Council also collects Council Tax on behalf of Hertfordshire County Council, Hertfordshire Police and Crime Commissioner and the Town and Parish Councils in the District.

The actual charge for each band varies from area to area. This is because certain services are provided by the District Council in some areas, but by the Town or Parish Council in others.

Town and Parish Councils have the freedom to set their own precepts. The amount you pay depends on where you live.

For more information, please see:

[www.stalbans.gov.uk/where-your-council-tax-goes](http://www.stalbans.gov.uk/where-your-council-tax-goes).