

**LAND OFF SANDPIT LANE AND
OAKLANDS COLLEGE, ST
ALBANS**

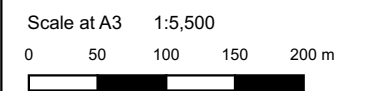
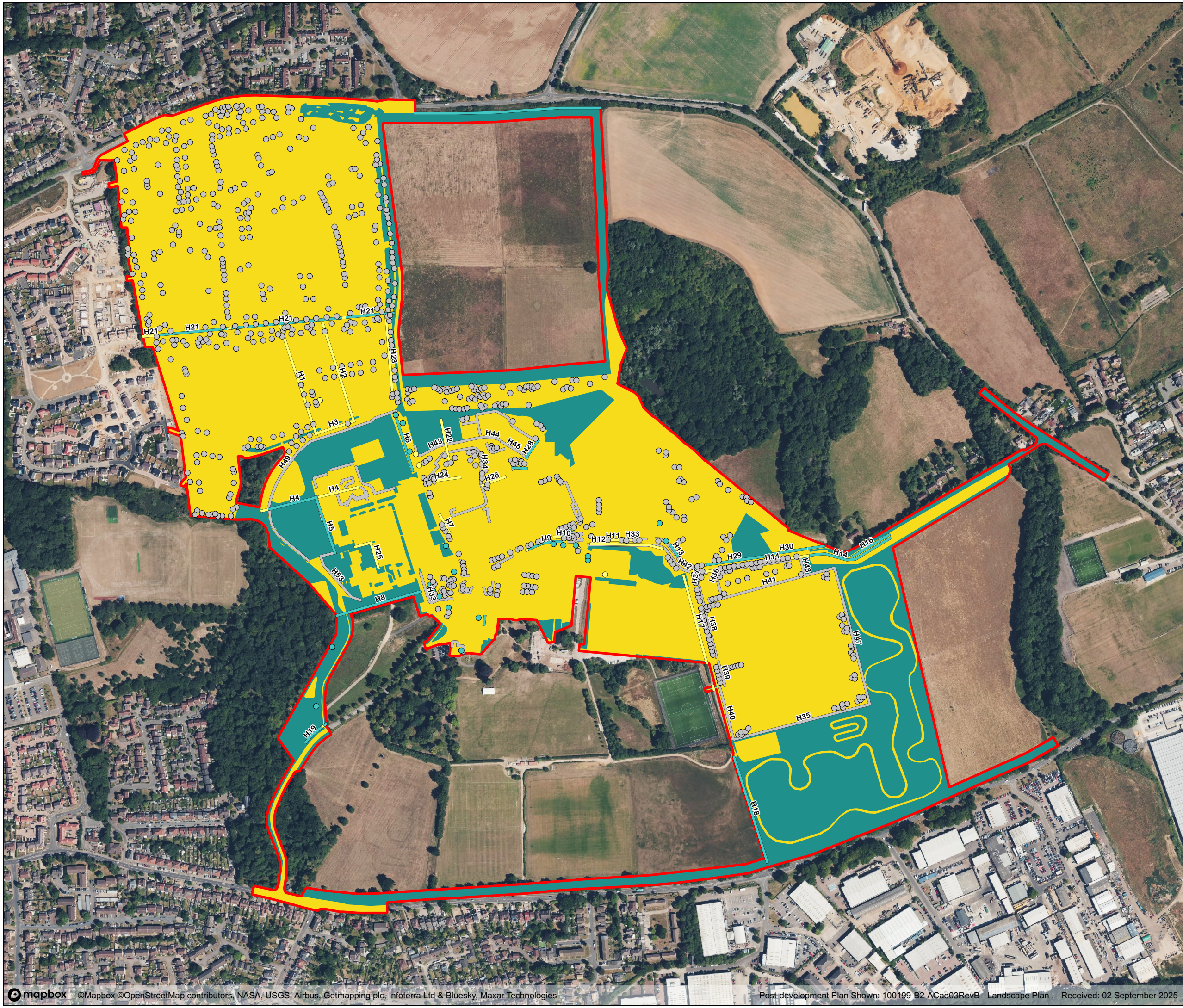
BIODIVERSITY NET GAIN ASSESSMENT

Map 5 - Habitat Retention

Client:	Taylor Wimpey North Thames
Date:	October 2025
Status:	Draft

KEY

- Site Boundary
- Habitats**
- Retained
- Lost
- Linear Habitats**
- Retained
- Lost
- Individual Trees**
- Created
- Retained
- Lost



Prepared by: KM	Date: 200625
Last amended by: JP	Date: 031025



ECOSA Ltd., Ten Hogs House, Manor Farm Offices,
Flexford Road, North Baddesley, Hampshire SO52 9DF
Telephone: 02380 261065 Email: info@ecosa.co.uk
Web: www.ecosa.co.uk

© This map is the copyright of Ecological Survey & Assessment Ltd. Any unauthorised reproduction or usage by any person is prohibited.