

**OAKLANDS COLLEGE, SANDPIT LANE, ST. ALBANS, HERTFORDSHIRE**

**ECOLOGICAL IMPACT ASSESSMENT**

**Map 6 - Automated Detector Locations (Oaklands Blossom)**

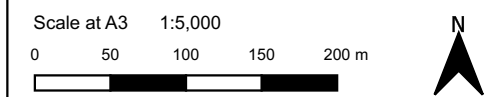
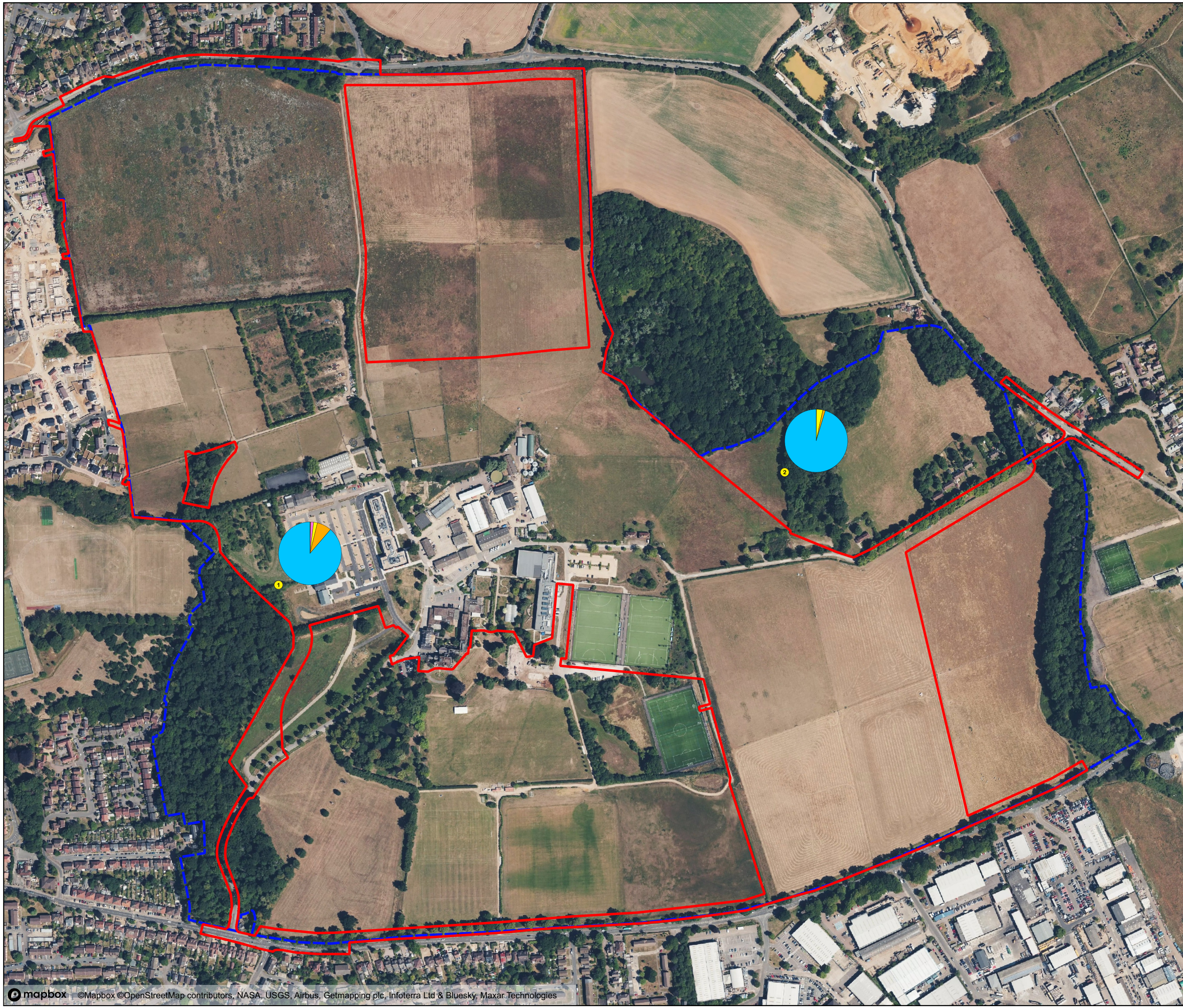
Client:	Taylor Wimpey North Thames
Date:	September 2025
Status:	Draft

**KEY**

- Site Boundary
- Automated Detector Locations

The location reference is denoted by the number visible within each point. The proportion of bat calls recorded at each location are split according to the species listed below:

- Rhinolophus bat species
- Long-eared bat species
- Barbastelle
- Myotis bat species
- Serotine
- Noctule bat species
- Nathusius pipistrelle
- Soprano pipistrelle
- Common pipistrelle
- Unidentified pipistrelle species



Prepared by: KM	Date: 270225
Last amended by: KM	Date: 110925



ECOSA Ltd., Ten Hogs House, Manor Farm Offices,  
 Flexford Road, North Baddesley, Hampshire SO52 9DF  
 Telephone: 02380 261065 Email: info@ecosa.co.uk  
 Web: www.ecosa.co.uk

© This map is the copyright of Ecological Survey & Assessment Ltd. Any unauthorised reproduction or usage by any person is prohibited.