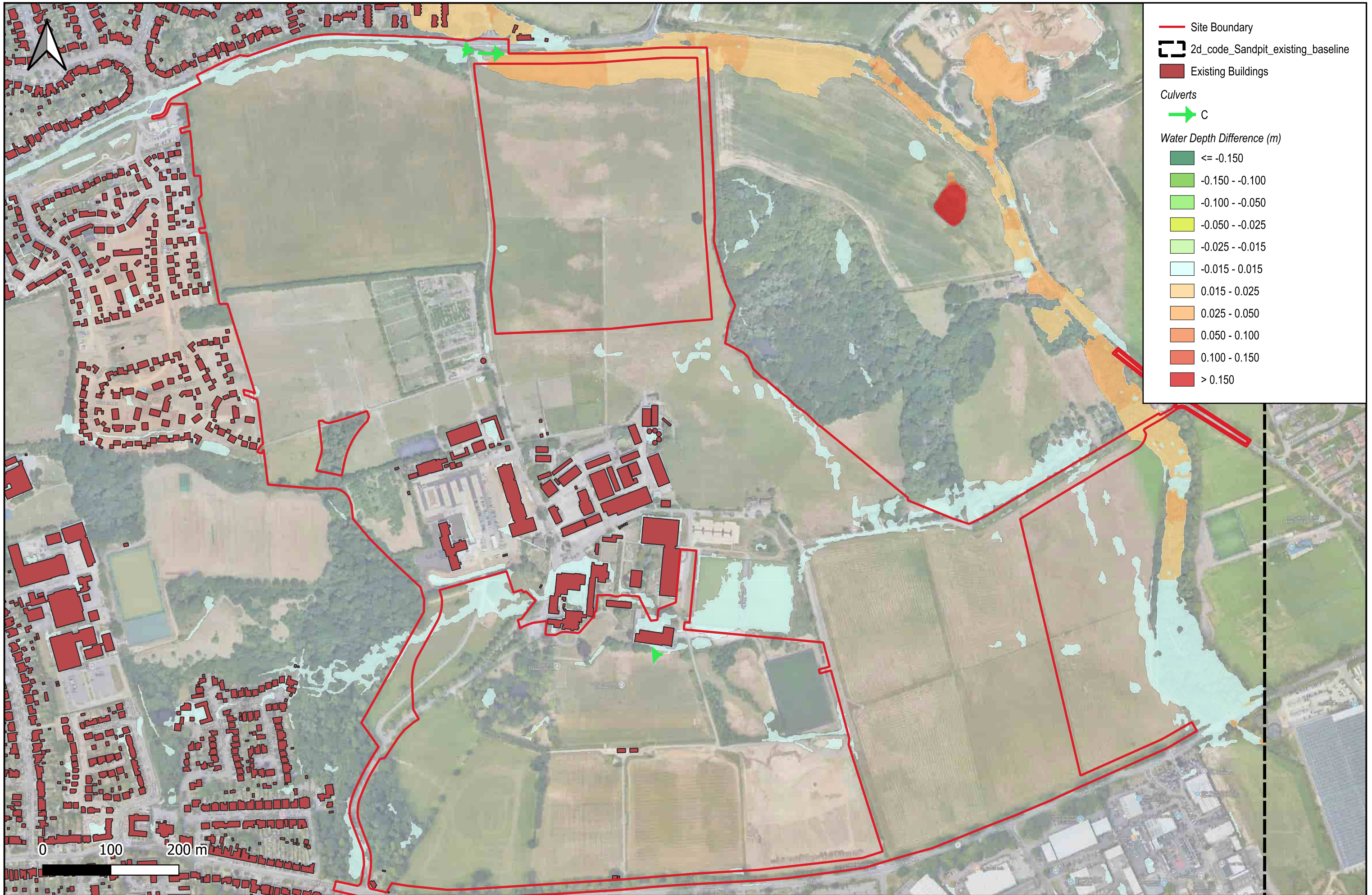


Map 22 - Sandpit Lane - Existing Blockage minus Existing Baseline 1hr 1.0% AEP - Comparison Depth

Scale @ A3:

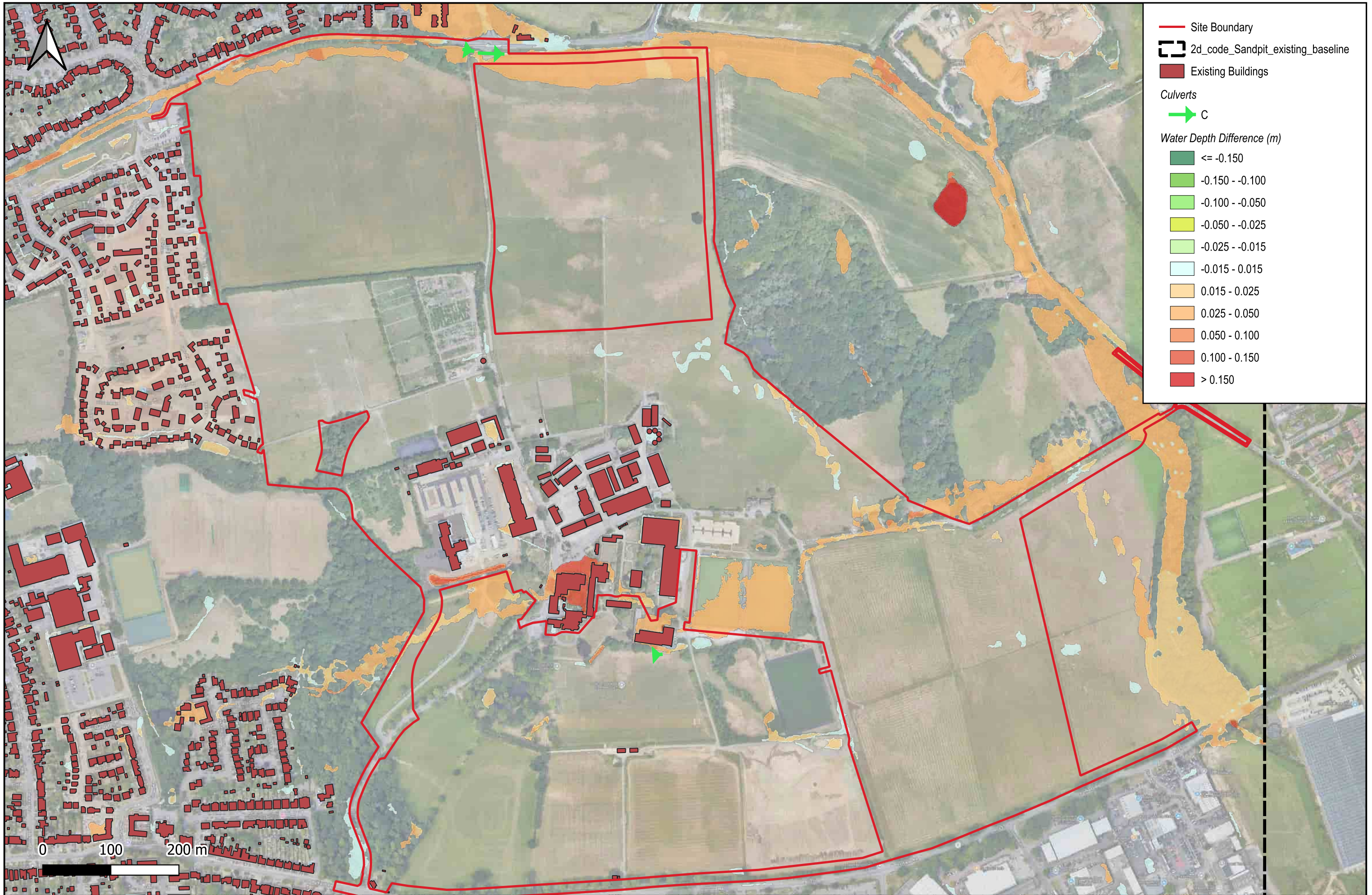
1:5000



Map 23 - Sandpit Lane - Existing Roughness Increase minus Existing Baseline 1hr 1.0% AEP - Comparison Depth

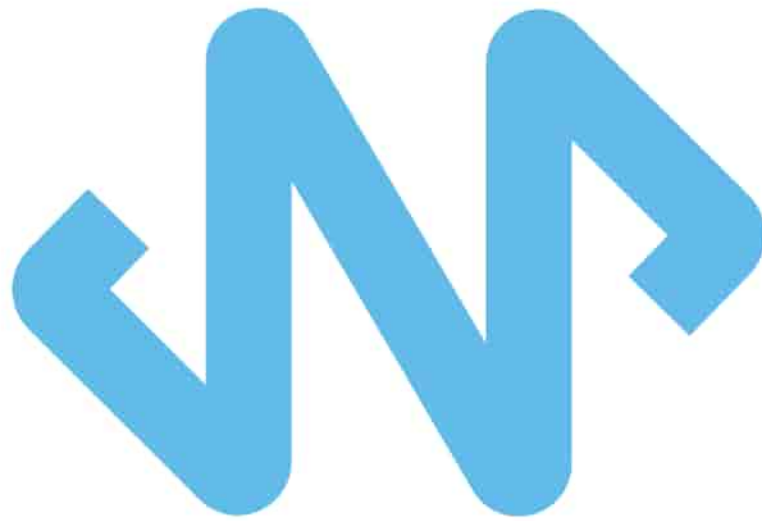
Scale @ A3:

1:5000



Map 24 - Sandpit Lane - Existing USBC Increase minus Existing Baseline 1hr 1.0% AEP - Comparison Depth

1:5000



# JNP GROUP

## CONSULTING ENGINEERS

### **Amersham (HQ)**

Sycamore House  
1 Woodside Road  
Amersham  
Buckinghamshire  
HP6 6AA

#### **telephone**

01494 771221

#### **more info**

[www.jnpgroup.co.uk/contact](http://www.jnpgroup.co.uk/contact)

### **Hartlepool**

The Innovation Centre  
Venture Court  
Queens Meadow Business Park  
Hartlepool  
TS25 5TG

#### **telephone**

01429 800711

#### **more info**

[www.jnpgroup.co.uk/contact](http://www.jnpgroup.co.uk/contact)

### **Brighouse**

Woodvale House  
Woodvale Road  
Brighouse  
West Yorkshire  
HD6 4AB

#### **telephone**

01484 400691

#### **more info**

[www.jnpgroup.co.uk/contact](http://www.jnpgroup.co.uk/contact)

### **Sheffield**

MBP2 Meadowhall Business Park  
Carbrook Hall Road  
Sheffield  
South Yorkshire  
S9 2EQ

#### **telephone**

0114 244 3500

#### **more info**

[www.jnpgroup.co.uk/contact](http://www.jnpgroup.co.uk/contact)

### **Bristol**

Whitefriars,  
Lewins Mead,  
Bristol

BS1 2NT

#### **telephone**

01174 721705

#### **more info**

[www.jnpgroup.co.uk/contact](http://www.jnpgroup.co.uk/contact)

### **Warwick**

Portobello House  
Portobello Way  
Warwick  
Warwickshire  
CV34 5GJ

#### **telephone**

01926 889955

#### **more info**

[www.jnpgroup.co.uk/contact](http://www.jnpgroup.co.uk/contact)

### **Glasgow**

Clydesdale House  
300 Springhill Parkway  
Glasgow Business Park  
Baillieston, Glasgow  
G69 6GA

#### **telephone**

0141 378 0808

#### **more info**

[www.jnpgroup.co.uk/contact](http://www.jnpgroup.co.uk/contact)