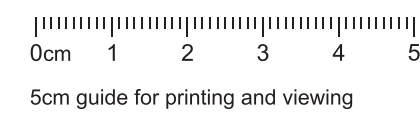




Baseline Photograph

View flat at a comfortable arm's length

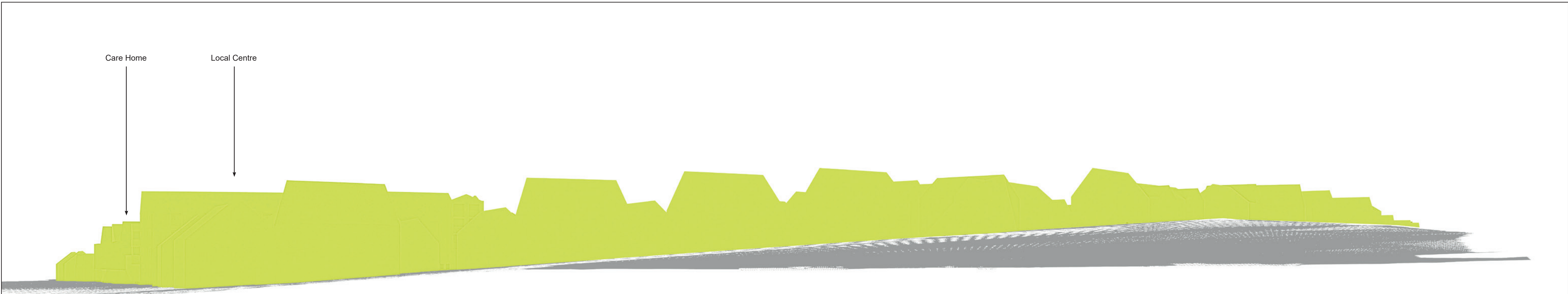


OS Reference: 517626 208403
 Eye Level: 84.492m AOD
 Direction of View: 120°
 Distance to Development: 119 m

Horizontal field of view: 90° (cylindrical projection)
 Principal Distance: 812.5mm
 Paper Size: 841 x 297 mm
 Correct printed image size: 820 x 260 mm

Camera: SONY ILCE-7M3
 Lens: 50mm
 Camera Height: 1.5m AGL
 Date and Time: 13/8/2025 12:18

Oaklands Blossom & Oaklands College
 Figure A4.1 - 1
 Viewpoint 1: View from Sandpit Lane, at Barnfield Road intersection

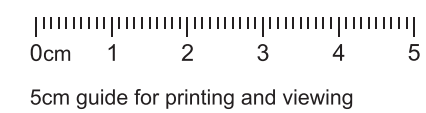


Wireline Drawing

View flat at a comfortable arm's length



Keys:
■ Proposed Buildings
■ Existing Buildings



OS Reference: 517626 208403
 Eye Level: 84.492m AOD
 Direction of View: 120°
 Distance to Development: 119 m

Horizontal field of view: 90° (cylindrical projection)
 Principal Distance: 812.5mm
 Paper Size: 841 x 297 mm
 Correct printed image size: 820 x 260 mm

Camera: SONY ILCE-7M3
 Lens: 50mm
 Camera Height: 1.5m AGL
 Date and Time: 13/8/2025 12:18

Oaklands Blossom & Oaklands College
 Figure A4.1 - 2
 Viewpoint 1: View from Sandpit Lane, at Barnfield Road intersection

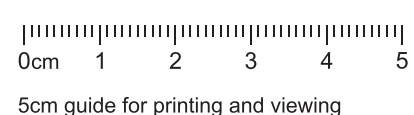


Photowire

View flat at a comfortable arm's length



Keys:
■ Proposed Buildings
■ Existing Buildings



OS Reference: 517626 208403
 Eye Level: 84.492m AOD
 Direction of View: 120°
 Distance to Development: 119 m

Horizontal field of view: 90° (cylindrical projection)
 Principal Distance: 812.5mm
 Paper Size: 841 x 297 mm
 Correct printed image size: 820 x 260 mm

Camera: SONY ILCE-7M3
 Lens: 50mm
 Camera Height: 1.5m AGL
 Date and Time: 13/8/2025 12:18

Oaklands Blossom & Oaklands College
 Figure A4.1 - 3
 Viewpoint 1: View from Sandpit Lane, at Barnfield Road intersection