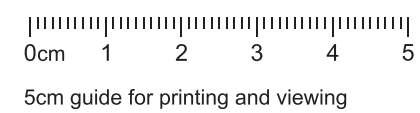




Baseline Photograph

View flat at a comfortable arm's length



OS Reference:	518085.052 208575.121	Horizontal field of view:	90° (cylindrical projection)
Eye Level:	78.17m AOD	Principal Distance:	812.5mm
Direction of View:	117°	Paper Size:	841 x 297 mm
Distance to Development:	182 m	Correct printed image size:	820 x 260 mm

Camera:	SONY ILCE-7M3
Lens:	50mm
Camera Height:	1.5m AGL
Date and Time:	17/7/2025 9:17

Oaklands Blossom & Oaklands College
Figure A4.21 - 1
Viewpoint 21: View from footpath between Sandpit Lane and House Lane

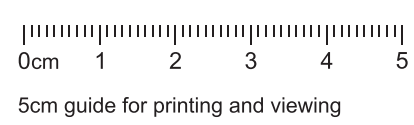


Wireline Drawing

View flat at a comfortable arm's length



Keys:
Proposed Buildings
Existing Buildings



OS Reference:	518085.052 208575.121	Horizontal field of view:	90° (cylindrical projection)	Camera:	SONY ILCE-7M3	Oaklands Blossom & Oaklands College Figure A4.21 - 2 Viewpoint 21: View from footpath between Sandpit Lane and House Lane
Eye Level:	78.17m AOD	Principal Distance:	812.5mm	Lens:	50mm	
Direction of View:	117°	Paper Size:	841 x 297 mm	Camera Height:	1.5m AGL	
Distance to Development:	182 m	Correct printed image size:	820 x 260 mm	Date and Time:	17/7/2025 9:17	



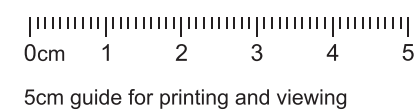
Photowire

View flat at a comfortable arm's length



Keys:

- Proposed Buildings
- Existing Buildings



OS Reference: 518085.052 208575.121
 Eye Level: 78.17m AOD
 Direction of View: 117°
 Distance to Development: 182 m

Horizontal field of view: 90° (cylindrical projection)
 Principal Distance: 812.5mm
 Paper Size: 841 x 297 mm
 Correct printed image size: 820 x 260 mm

Camera: SONY ILCE-7M3
 Lens: 50mm
 Camera Height: 1.5m AGL
 Date and Time: 17/7/2025 9:17

Oaklands Blossom & Oaklands College

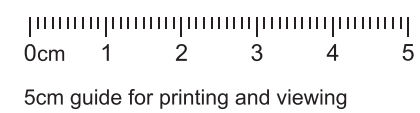
Figure A4.21 - 3

Viewpoint 21: View from footpath between Sandpits Lane and House Lane



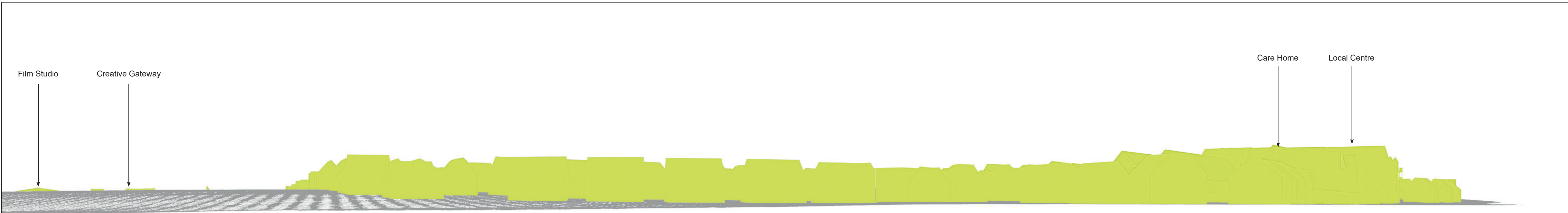
Baseline Photograph

View flat at a comfortable arm's length



OS Reference:	518085.052 208575.121	Horizontal field of view:	90° (cylindrical projection)	Camera:	SONY ILCE-7M3
Eye Level:	78.17m AOD	Principal Distance:	812.5mm	Lens:	50mm
Direction of View:	207°	Paper Size:	841 x 297 mm	Camera Height:	1.5m AGL
Distance to Development:	182 m	Correct printed image size:	820 x 260 mm	Date and Time:	17/7/2025 9:17

Oaklands Blossom & Oaklands College
Figure A4.21 - 4
Viewpoint 21: View from footpath between Sandpit Lane and House Lane

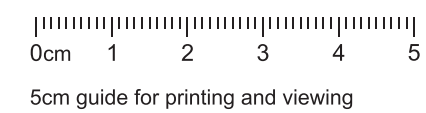


Wireline Drawing

View flat at a comfortable arm's length



Keys:
■ Proposed Buildings
■ Existing Buildings



OS Reference: 518085.052 208575.121
 Eye Level: 78.17m AOD
 Direction of View: 207°
 Distance to Development: 182 m

Horizontal field of view: 90° (cylindrical projection)
 Principal Distance: 812.5mm
 Paper Size: 841 x 297 mm
 Correct printed image size: 820 x 260 mm

Camera: SONY ILCE-7M3
 Lens: 50mm
 Camera Height: 1.5m AGL
 Date and Time: 17/7/2025 9:17

Oaklands Blossom & Oaklands College

Figure A4.21 - 5
 Viewpoint 21: View from footpath between Sandpit Lane and House Lane



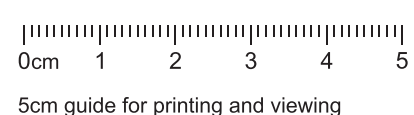
Photowire

View flat at a comfortable arm's length



Keys:

- Proposed Buildings
- Existing Buildings



OS Reference:	518085.052 208575.121	Horizontal field of view:	90° (cylindrical projection)
Eye Level:	78.17m AOD	Principal Distance:	812.5mm
Direction of View:	207°	Paper Size:	841 x 297 mm
Distance to Development:	182 m	Correct printed image size:	820 x 260 mm

Camera:	SONY ILCE-7M3
Lens:	50mm
Camera Height:	1.5m AGL
Date and Time:	17/7/2025 9:17

Oaklands Blossom & Oaklands College
 Figure A4.21 - 6
 Viewpoint 21: View from footpath between Sandpit Lane and House Lane