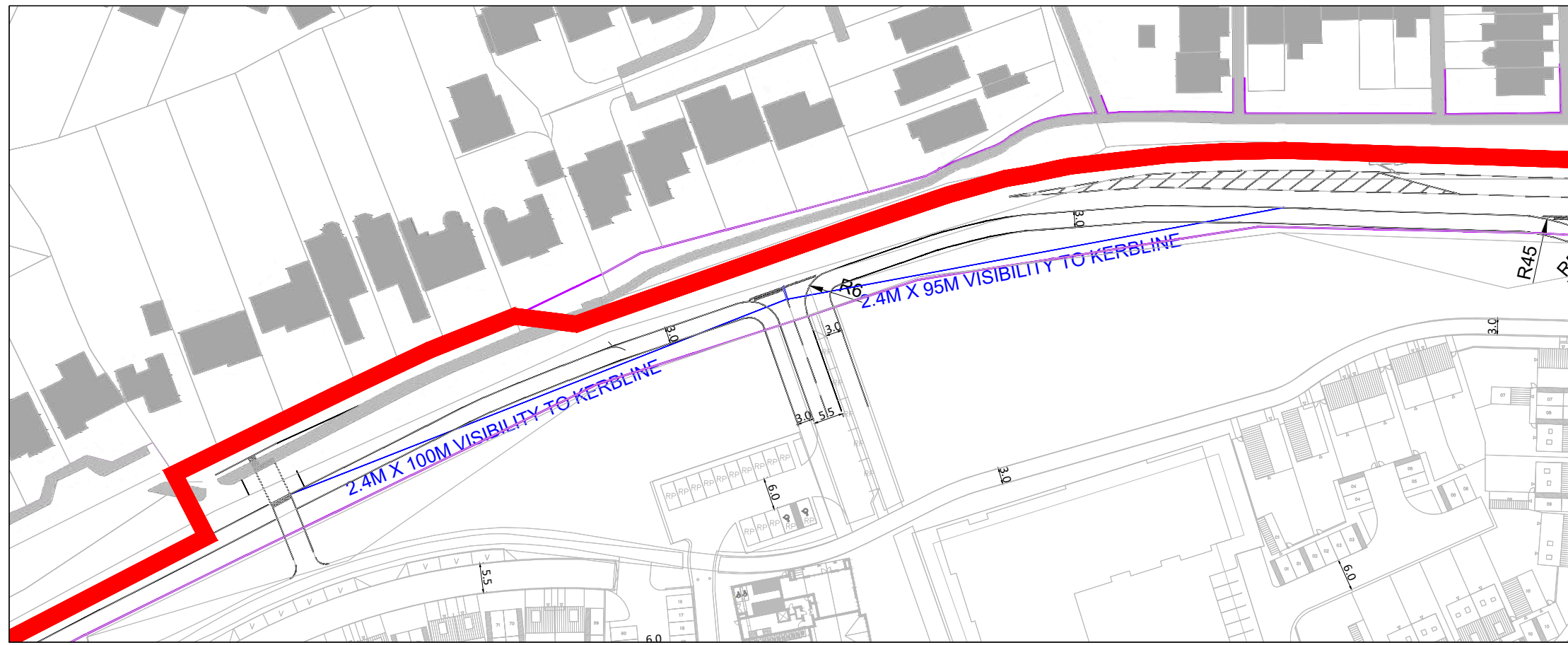
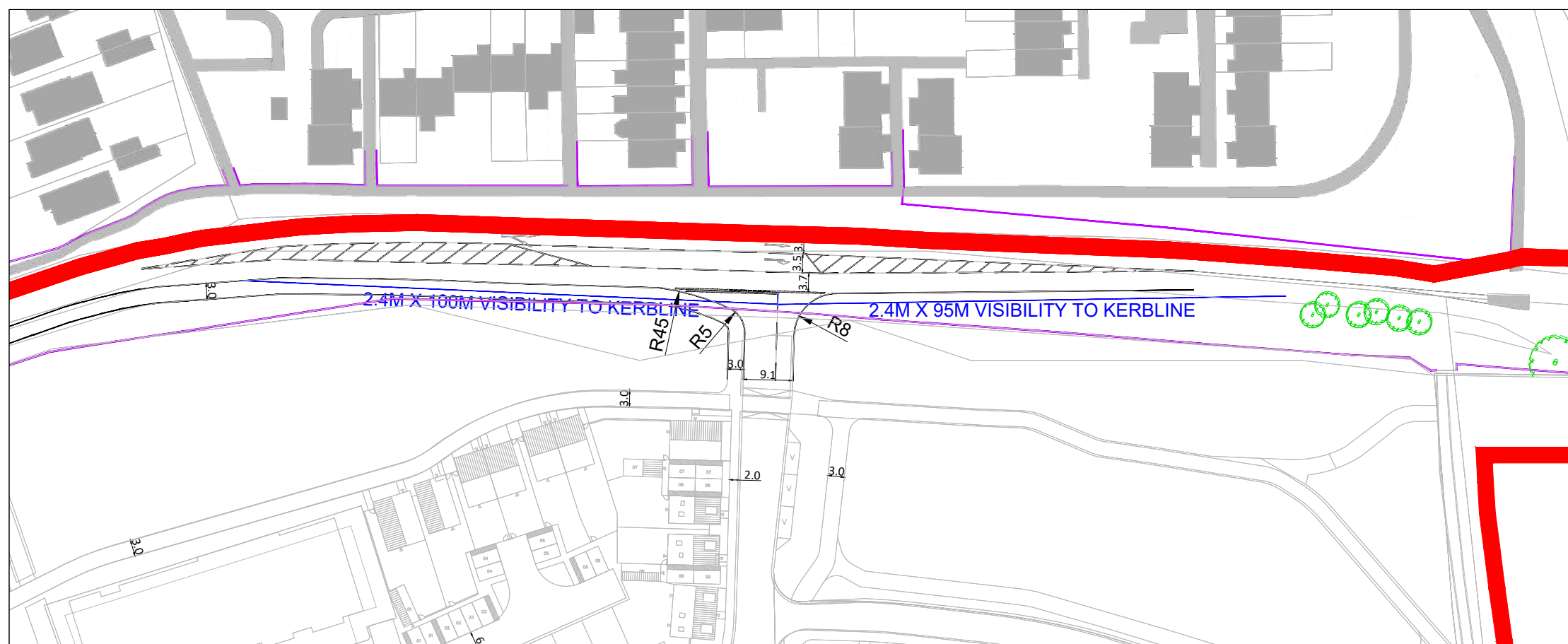


C:\Users\AndrewNock\Documents\Evoke Transport\Evoke Projects - Documents\2024\R-24-0187 Land of Sandpit Lane, St Albans\50 Drawings\51 AutoCAD\Final Drawings\R-24-0187-HY01B.dwg



NOTES

- DO NOT SCALE FROM THIS DRAWING. WORK FROM FIGURED DIMENSIONS ONLY.
- EVOKE TRANSPORT PLANNING CONSULTANTS LIMITED ACCEPTS NO RESPONSIBILITY FOR THE ACCURACY OF THIRD PARTY INFORMATION - THIS MUST BE TREATED AS INDICATIVE ONLY.
- VISIBILITY SPLAYS ARE BASED ON THE RECORDED 85TH PERCENTILE SPEEDS OF 38-MPH WESTBOUND AND 39MPH EASTBOUND.

KEY

- VISIBILITY SPLAYS
- HIGHWAY BOUNDARY
- PROPOSED ACCESS DESIGN



C	UPDATED LAYOUT PLANS	OH	OH	01.10.25
B	UPDATED LAYOUT PLANS	OH	DF	05.09.25
A	UPDATED ACCESS ARRANGEMENTS	OH	DF	25.04.25
-	FIRST ISSUE	OH	DF	14.01.25
Rev	Amendment	Drn	App	Date

Reproduced from Ordnance Survey digital data with the permission of the Controller of His Majesty's Stationery Office, Crown copyright (License number 100022432).



Evoke Transport Consultants Limited
 R+ Building
 2 Blagrove Street
 Reading, RG1 1AZ
 Telephone: 01183 800 182
 E: info@evoketransport.co.uk
 W: www.evoketransport.co.uk

Project Name
OAKLANDS BLOSSOM & OAKLANDS COLLEGE, ST ALBANS

Drawing Title
OAKLANDS BLOSSOM PROPOSED SITE ACCESS ARRANGEMENT

Client
TAYLOR WIMPEY & OAKLANDS COLLEGE

Drawn by OH	Approved by DF	Date 01.10.25
Scale 1:1,000 @ A3	Job No R-24-0187	
Drawing No R-24-0187/HY01	Rev C	