

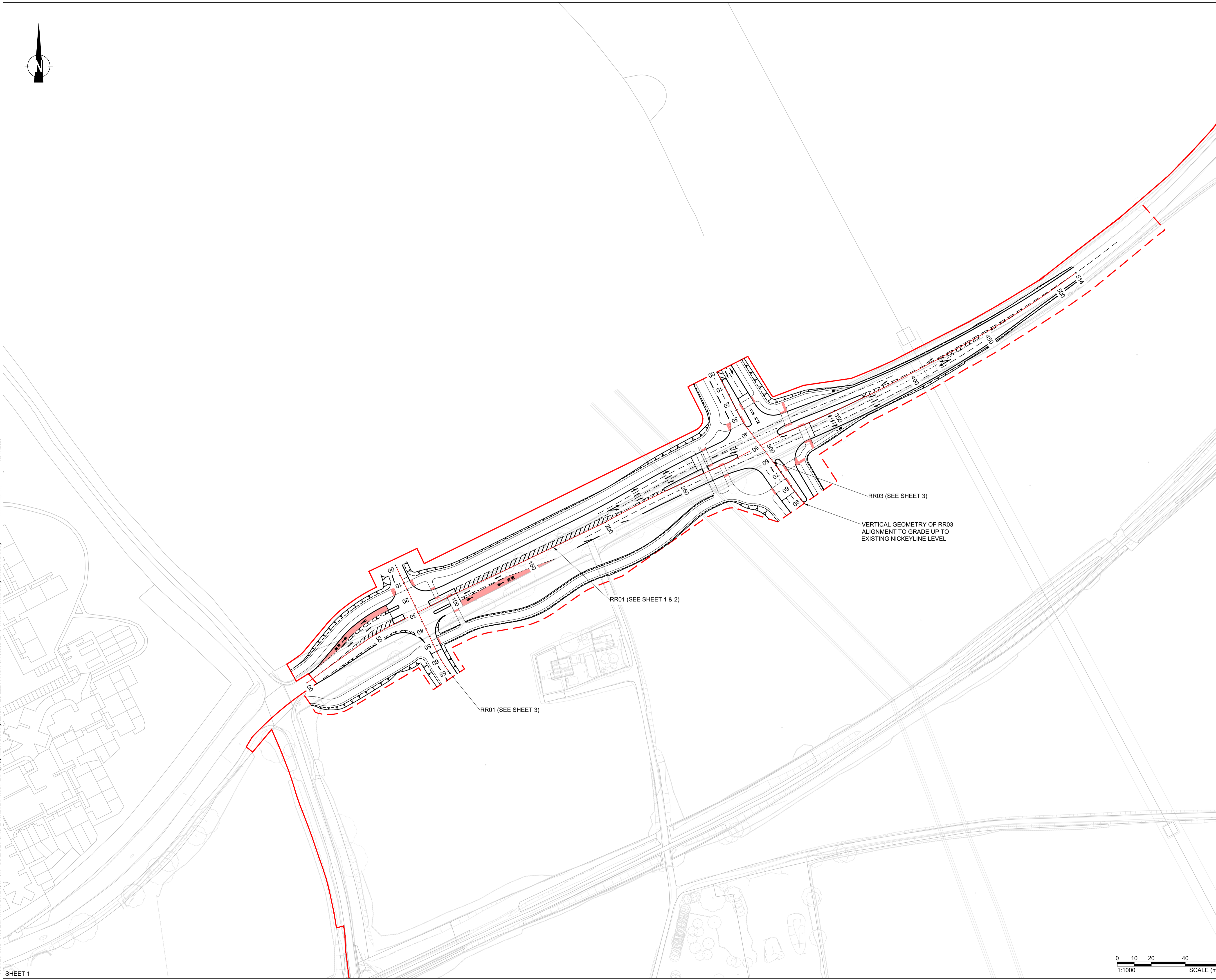


NOTES

1. THE HIGHWAY AUTHORITY IS HERTFORDSHIRE COUNTY COUNCIL EXCEPT FOR THE M1 SLIP ROADS WHERE NATIONAL HIGHWAYS ARE THE HIGHWAY AUTHORITY.
2. ANY DISCREPANCIES ON SITE MUST BE REPORTED TO THE PROJECT MANAGER IMMEDIATELY.
3. ALL WORKS ARE TO BE CARRIED OUT IN ACCORDANCE WITH THE APPROVED CONTRACT DRAWINGS WITHIN APPENDIX 0/4, THE ROADS IN HERTFORDSHIRE: HIGHWAY DESIGN GUIDE AND THE MANUAL OF CONTRACT DOCUMENTS FOR HIGHWAY WORKS (SHW) VOLUME 1 AND SPECIFICATION APPENDICES.
4. PLEASE REFER TO DRAWINGS EHUK-VEC-ZZZ-XXX-SK-CR-10086.1-4 FOR DETAILS ON LONG SECTION GEOMETRY.

KEY

- PLANNING REDLINE BOUNDARY
- - - DETAILED JUNCTION WITH THE OUTLINE PLANNING APPLICATION BOUNDARY



P01	FIRST ISSUE	07.11.25	JB	NL	AB
Rev	Amendments	Date	By	Chk	Auth



Drawing Status & Suitability Code  
**FOR PLANNING SUBMISSION S2**

Client  
**THE CROWN ESTATE**

Project  
**EAST HEMEL HEMPSTEAD**

Drawing Title  
**DETAILED PLANNING - REDBOURN ROAD  
 LONG SECTION LOCATION PLAN**

Scale	1:1000	@ A1	SLR Project No.	425.065533.00001			
Designed	JB	Drawn	JB	Checked	NL	Authorised	AB
Date	14.10.25	Date	14.10.25	Date	14.10.25	Date	14.10.25

Drawing Number	<b>EHUK-VEC-ZZZ-XXX-SK-CR-00082.12</b>	Rev	<b>P01</b>
----------------	--	-----	------------

