

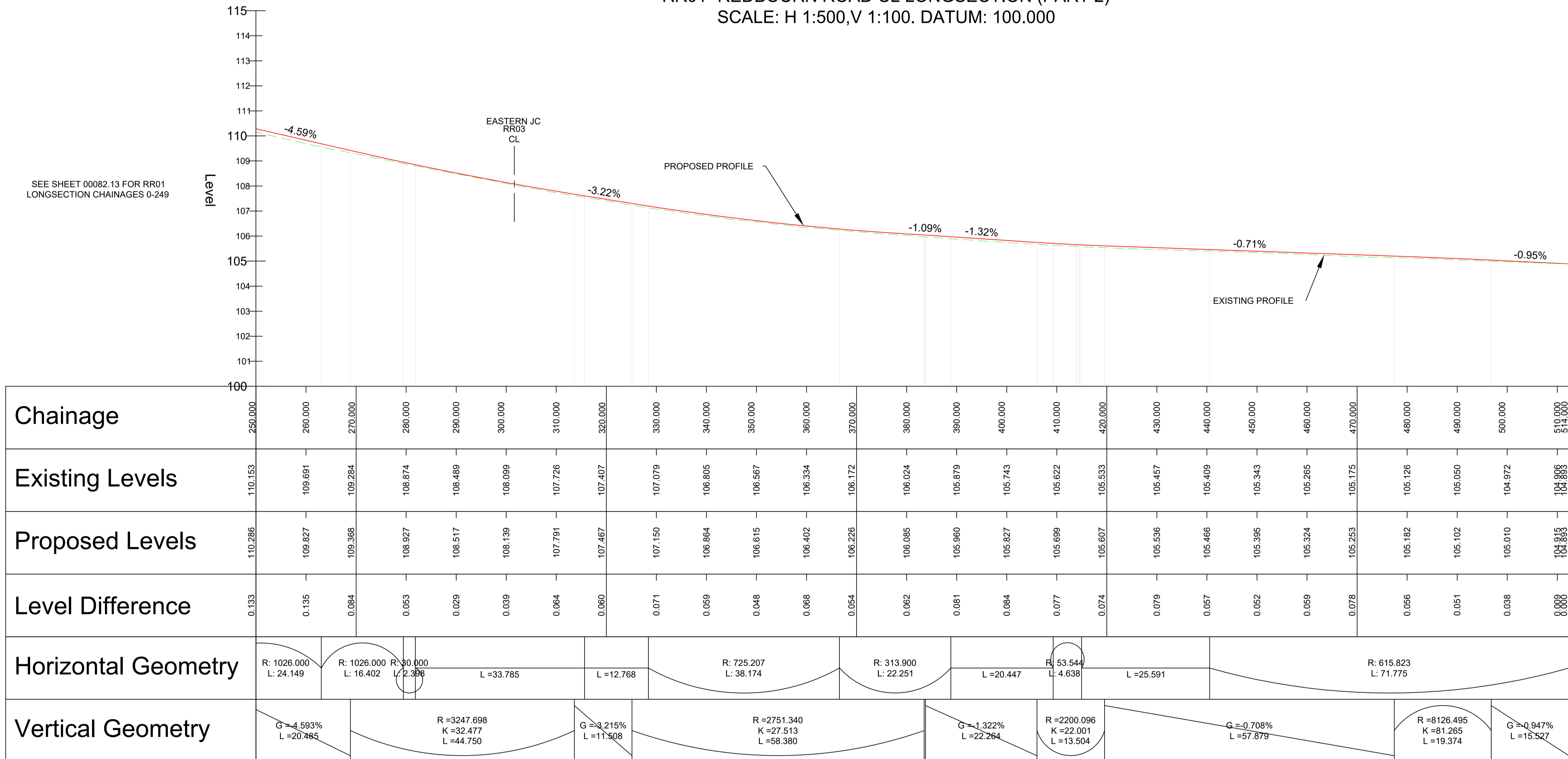
NOTES

1. THE HIGHWAY AUTHORITY IS HERTFORDSHIRE COUNTY COUNCIL EXCEPT FOR THE M1 SLIP ROADS WHERE NATIONAL HIGHWAYS ARE THE HIGHWAY AUTHORITY.
2. ANY DISCREPANCIES ON SITE MUST BE REPORTED TO THE PROJECT MANAGER IMMEDIATELY.
3. ALL WORKS ARE TO BE CARRIED OUT IN ACCORDANCE WITH THE APPROVED CONTRACT DRAWINGS WITHIN APPENDIX 0/4, THE ROADS IN HERTFORDSHIRE: HIGHWAY DESIGN GUIDE AND THE MANUAL OF CONTRACT DOCUMENTS FOR HIGHWAY WORKS (SHW) VOLUME 1 AND SPECIFICATION APPENDICES.
4. PLEASE REFER TO DRAWING EHUJ-VEC-ZZZ-XXX-SK-CR-10086.1 FOR ALIGNMENT LONG SECTION LOCATION PLAN.

KEY

- EXISTING GROUND PROFILE
- PROPOSED GROUND PROFILE

RR01- REDBOURN ROAD CL LONGSECTION (PART 2)
SCALE: H 1:500,V 1:100. DATUM: 100.000



P01	FIRST ISSUE	07.11.25	JB	NL	AB
Rev	Amendments	Date	By	Chk	Auth



www.slrconsulting.com

Drawing Status & Suitability Code
FOR PLANNING SUBMISSION S2

Client
THE CROWN ESTATE

Project
EAST HEMEL HEMPSTEAD

Drawing Title
DETAILED PLANNING - REDBOURN ROAD LONG SECTION PLAN, SHEET 2

Scale	1:500	@ A1	SLR Project No.	425.065533.00001			
Designed	JB	Drawn	JB	Checked	NL	Authorised	AB
Date	14.10.25	Date	14.10.25	Date	14.10.25	Date	14.10.25



Drawing Number
EHUK-VEC-ZZZ-XXX-SK-CR-00082.14

Rev
P01