

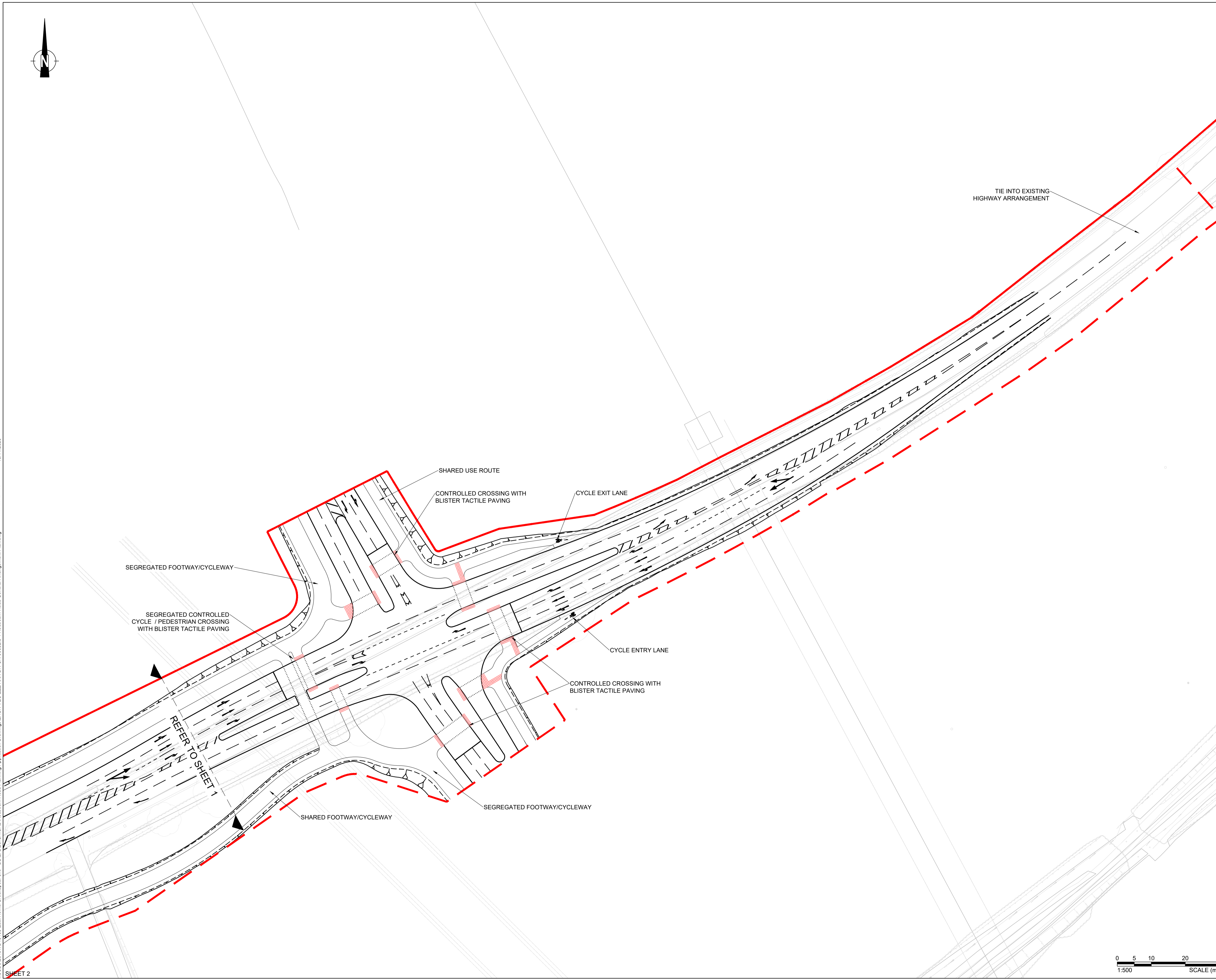
NOTES

1. THE HIGHWAY AUTHORITY IS HERTFORDSHIRE COUNTY COUNCIL EXCEPT FOR THE M1 SLIP ROADS WHERE NATIONAL HIGHWAYS ARE THE HIGHWAY AUTHORITY.
2. ANY DISCREPANCIES ON SITE MUST BE REPORTED TO THE PROJECT MANAGER IMMEDIATELY.
3. ALL WORKS ARE TO BE CARRIED OUT IN ACCORDANCE WITH THE APPROVED CONTRACT DRAWINGS WITHIN APPENDIX 0/4, THE ROADS IN HERTFORDSHIRE: HIGHWAY DESIGN GUIDE AND THE MANUAL OF CONTRACT DOCUMENTS FOR HIGHWAY WORKS (SHW) VOLUME 1 AND SPECIFICATION APPENDICES.

KEY

- PLANNING REDLINE BOUNDARY
- - - DETAILED JUNCTION WITH THE OUTLINE PLANNING APPLICATION BOUNDARY

LOCATION PLAN



19/11/2025

I:\069\2019\WD19103 East Hemel Hempstead Road Planning Application Drawings\EHUK-VEC-ZZZ-XXX-SK-CR-00082.3-4 Redbourn Road General Arrangement Plan.dwg

P01	FIRST ISSUE	24.10.25	JB	NL	AB
Rev	Amendments	Date	By	Chk	Auth



FOR PLANNING SUBMISSION S2

Client: THE CROWN ESTATE

Project: EAST HEMEL HEMPSTEAD

Drawing Title: DETAILED PLANNING - REDBOURN ROAD GENERAL ARRANGEMENT PLAN, SHEET 2

Scale: 1:500 @ A1 SLR Project No: 425.065533.00001

Designed	Drawn	Checked	Authorised
JB	JB	NL	AB
Date	Date	Date	Date
14.10.25	14.10.25	14.10.25	14.10.25

Drawing Number: EHUK-VEC-ZZZ-XXX-SK-CR-00082.4 Rev: P01

